

COL20A1 Antibody

Catalog No: #36361

Orders: order@signalwayantibody.comSupport: tech@signalwayantibody.com

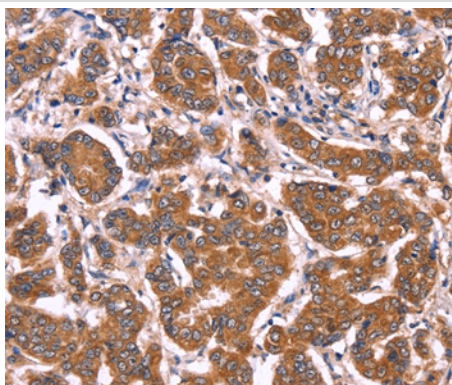
Description

Product Name	COL20A1 Antibody
Host Species	Rabbit
Clonality	Polyclonal
Purification	Antigen affinity purification.
Applications	IHC
Species Reactivity	Hu
Specificity	The antibody detects endogenous levels of total COL20A1 protein.
Immunogen Type	Recombinant Protein
Immunogen Description	Fusion protein corresponding to a region derived from internal residues of human collagen, type XX, alpha 1
Target Name	COL20A1
Other Names	bA261N11.4
Accession No.	Swiss-Prot#: Q9P218NCBI Gene ID: 57642Gene Accssion: BC019637
Uniprot	Q9P218
GeneID	57642;
Concentration	1.7mg/ml
Formulation	Rabbit IgG in pH7.4 PBS, 0.05% NaN ₃ , 40% Glycerol.
Storage	Store at -20°C

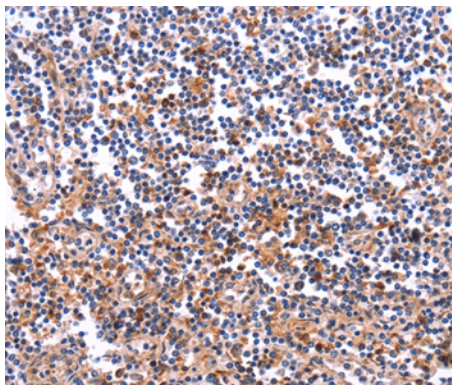
Application Details

Immunohistochemistry: 1:50-1:200

Images



Immunohistochemical analysis of paraffin-embedded Human breast cancer tissue using #36361 at dilution 1/40.



Immunohistochemical analysis of paraffin-embedded Human tonsil tissue using #36361 at dilution 1/40.

Background

The extensive family of COL gene products (collagens) is composed of several chain types, including fibril-forming interstitial collagens (types I, II, III and V) and basement membrane collagens (type IV), each type containing multiple isoforms. Collagens are fibrous, extracellular matrix proteins with high tensile strength and are the major components of connective tissue, such as tendons and cartilage. All collagens contain a triple helix domain and frequently show lateral self-association in order to form complex connective tissues. Several collagens also play a role in cell adhesion, important for maintaining normal tissue architecture and function.

Note: This product is for in vitro research use only