

CTAGE5 Antibody

Catalog No: #36375



Orders: order@signalwayantibody.com
Support: tech@signalwayantibody.com

Description

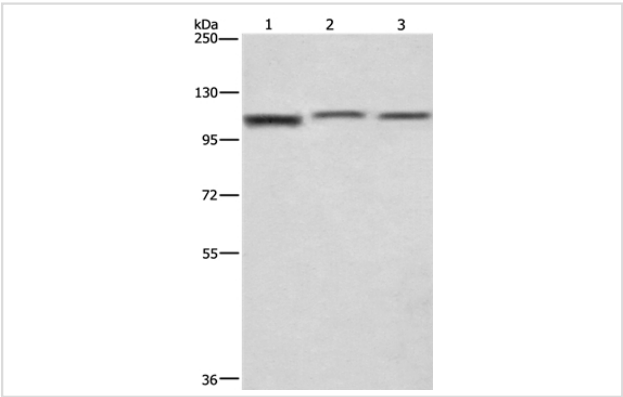
Product Name	CTAGE5 Antibody
Host Species	Rabbit
Clonality	Polyclonal
Purification	Antigen affinity purification.
Applications	WB IHC
Species Reactivity	Hu
Specificity	The antibody detects endogenous levels of total CTAGE5 protein.
Immunogen Type	Recombinant Protein
Immunogen Description	Fusion protein corresponding to a region derived from internal residues of human CTAGE family, member 5
Target Name	CTAGE5
Other Names	MEA6; MGEA; MGEA6; MGEA11
Accession No.	Swiss-Prot#: O15320NCBI Gene ID: 4253Gene Accssion: BC064355
Uniprot	Q96PC5
GeneID	4253;
SDS-PAGE MW	91kd
Concentration	1.6mg/ml
Formulation	Rabbit IgG in pH7.4 PBS, 0.05% NaN3, 40% Glycerol.
Storage	Store at -20°C

Application Details

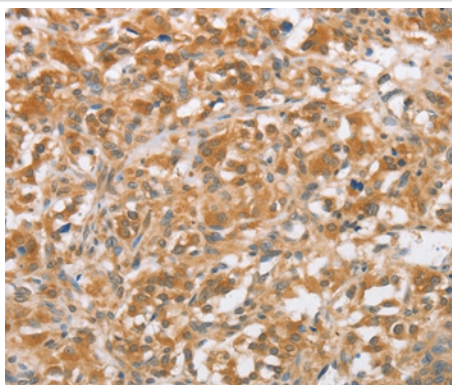
Western blotting: 1:200-1:1000

Immunohistochemistry: 1:50-1:200

Images



Gel: 10%SDS-PAGE
Lysates (from left to right): PC3 cell, human brain malignant glioma tissue and A172 cell
Amount of lysate: 40ug per lane
Primary antibody: 1/200 dilution
Secondary antibody dilution: 1/8000
Exposure time: 1 second



Immunohistochemical analysis of paraffin-embedded Human thyroid cancer tissue using #36375 at dilution 1/40.

Background

The protein encoded by this gene is a tumor-associated antigen found in cutaneous T-cell lymphoma and several other cancers. Autoantibodies against the encoded protein have been found in some cancers. Several transcript variants encoding different isoforms have been found for this gene.

Note: This product is for in vitro research use only