

CYP4A11 Antibody

Catalog No: #36391

Orders: order@signalwayantibody.comSupport: tech@signalwayantibody.com

Description

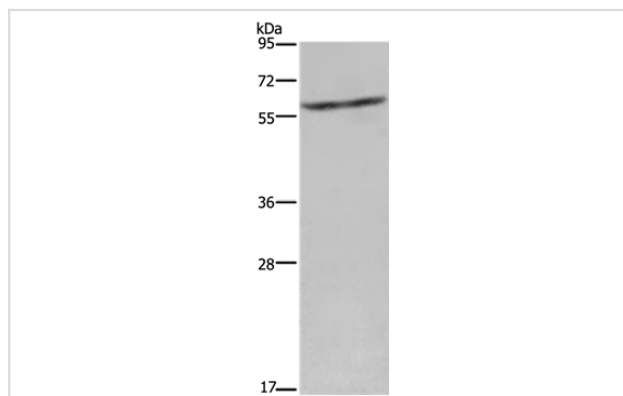
Product Name	CYP4A11 Antibody
Host Species	Rabbit
Clonality	Polyclonal
Purification	Antigen affinity purification.
Applications	WB IHC
Species Reactivity	Hu Ms
Specificity	The antibody detects endogenous levels of total CYP4A11 protein.
Immunogen Type	Recombinant Protein
Immunogen Description	Fusion protein corresponding to residues near the N terminal of human cytochrome P450, family 4, subfamily A, polypeptide 11
Target Name	CYP4A11
Other Names	CP4Y; CYP4A2; CYP4AII
Accession No.	Swiss-Prot#: Q02928NCBI Gene ID: 1579Gene Accssion: BC022851
Uniprot	Q02928
GeneID	1579;
SDS-PAGE MW	59kd
Concentration	1.5mg/ml
Formulation	Rabbit IgG in pH7.4 PBS, 0.05% NaN ₃ , 40% Glycerol.
Storage	Store at -20°C

Application Details

Western blotting: 1:200-1:1000

Immunohistochemistry: 1:50-1:200

Images



Gel: 8%SDS-PAGE

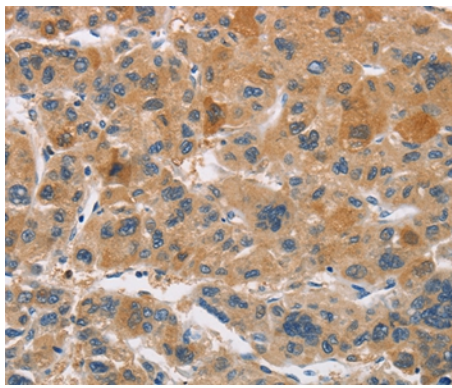
Lysates (from left to right): Mouse liver tissue

Amount of lysate: 40ug per lane

Primary antibody: 1/250 dilution

Secondary antibody dilution: 1/8000

Exposure time: 2 minutes



Immunohistochemical analysis of paraffin-embedded Human liver cancer tissue using #36391 at dilution 1/30.

Background

This gene encodes a member of the cytochrome P450 superfamily of enzymes. The cytochrome P450 proteins are monooxygenases which catalyze many reactions involved in drug metabolism and synthesis of cholesterol, steroids and other lipids. This protein localizes to the endoplasmic reticulum and hydroxylates medium-chain fatty acids such as laurate and myristate.

Note: This product is for in vitro research use only