

ribosomal protein S10 antibody

Catalog No: #22116

Orders: order@signalwayantibody.comSupport: tech@signalwayantibody.com

Description

Product Name	ribosomal protein S10 antibody
Host Species	Rabbit
Clonality	Polyclonal
Purification	Purified by antigen-affinity chromatography.
Applications	WB IHC
Species Reactivity	Hu
Immunogen Type	Recombinant protein
Immunogen Description	Recombinant protein fragment contain a sequence corresponding to a region within amino acids 1 and 161 of Human RPS10
Target Name	ribosomal protein S10
Accession No.	Swiss-Prot:P46783Gene ID:6204
Uniprot	P46783
GeneID	6204;
Concentration	0.6mg/ml
Formulation	Supplied in 0.1M Tris-buffered saline with 10% Glycerol (pH7.0). 0.01% Thimerosal was added as a preservative.
Storage	Store at -20°C for long term preservation (recommended). Store at 4°C for short term use.

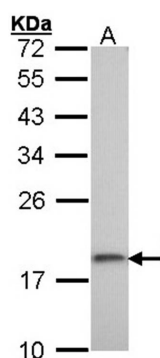
Application Details

Predicted MW: 19kd

Western blotting: 1:500-1:3000

Immunohistochemistry: 1:50-1:500

Images

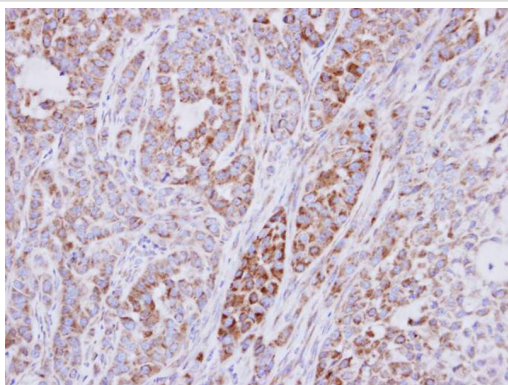


Sample (30 ug of whole cell lysate)

A: A431

12% SDS PAGE

Primary antibody diluted at 1: 1000



Immunohistochemical analysis of paraffin-embedded A549 xenograft, using RPS10 antibody at 1: 500 dilution.

Background

Ribosomes, the organelles that catalyze protein synthesis, consist of a small 40S subunit and a large 60S subunit. Together these subunits are composed of 4 RNA species and approximately 80 structurally distinct proteins. This gene encodes a ribosomal protein that is a component of the 40S subunit. The protein belongs to the S10E family of ribosomal proteins. It is located in the cytoplasm. Variable expression of this gene in colorectal cancers compared to adjacent normal tissues has been observed, although no correlation between the level of expression and the severity of the disease has been found. As is typical for genes encoding ribosomal proteins, there are multiple processed pseudogenes of this gene dispersed through the genome. [provided by RefSeq]

Note: This product is for in vitro research use only