

DAB2 Antibody

Catalog No: #36395



Orders: order@signalwayantibody.com
Support: tech@signalwayantibody.com

Description

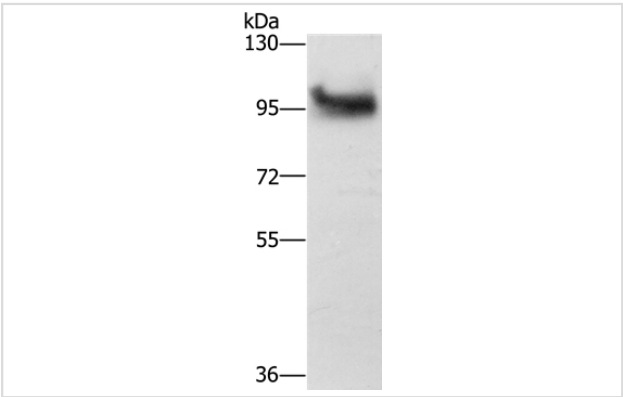
Product Name	DAB2 Antibody
Host Species	Rabbit
Clonality	Polyclonal
Purification	Antigen affinity purification.
Applications	WB IHC
Species Reactivity	Hu
Specificity	The antibody detects endogenous levels of total DAB2 protein.
Immunogen Type	Recombinant Protein
Immunogen Description	Fusion protein corresponding to a region derived from internal residues of human Dab, mitogen-responsive phosphoprotein, homolog 2 (Drosophila)
Target Name	DAB2
Other Names	DOC2; DOC-2
Accession No.	Swiss-Prot#: P98082NCBI Gene ID: 1601Gene Accssion: BC003064/P98082
Uniprot	P98082
GeneID	1601;
SDS-PAGE MW	82kd
Concentration	1.2mg/ml
Formulation	Rabbit IgG in pH7.4 PBS, 0.05% NaN3, 40% Glycerol.
Storage	Store at -20°C

Application Details

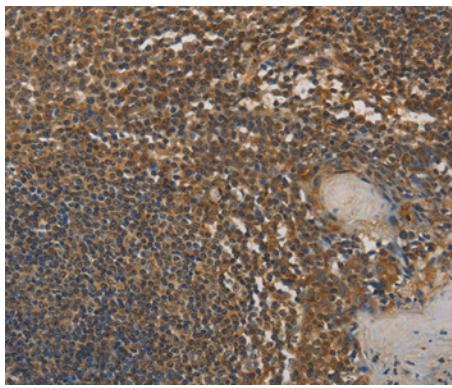
Western blotting: 1:500-1:2000

Immunohistochemistry: 1:50-1:200

Images



Gel: 6%SDS-PAGE
Lysate: 40ug Hela cell
Primary antibody: 1/300 dilution
Secondary antibody dilution: 1/8000
Exposure time: 1 second



Immunohistochemical analysis of paraffin-embedded Human thyroid cancer tissue using #36395 at dilution 1/25.

Background

This gene encodes a mitogen-responsive phosphoprotein. It is expressed in normal ovarian epithelial cells, but is down-regulated or absent from ovarian carcinoma cell lines, suggesting its role as a tumor suppressor. This protein binds to the SH3 domains of GRB2, an adaptor protein that couples tyrosine kinase receptors to SOS (a guanine nucleotide exchange factor for Ras), via its C-terminal proline-rich sequences, and may thus modulate growth factor/Ras pathways by competing with SOS for binding to GRB2. Alternatively spliced transcript variants encoding different isoforms have been found for this gene.

Note: This product is for in vitro research use only