

DCP1A Antibody

Catalog No: #36402

Orders: order@signalwayantibody.comSupport: tech@signalwayantibody.com

Description

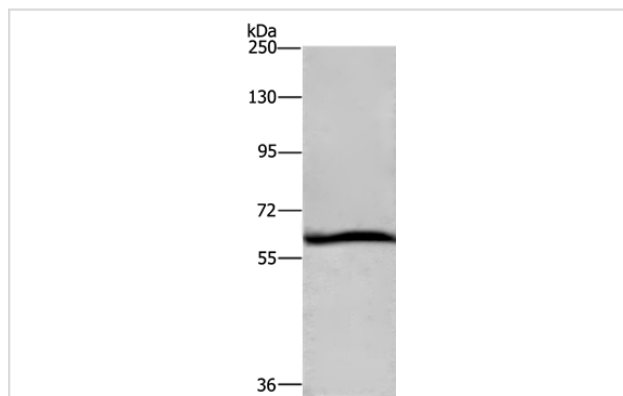
Product Name	DCP1A Antibody
Host Species	Rabbit
Clonality	Polyclonal
Purification	Antigen affinity purification.
Applications	WB IHC
Species Reactivity	Hu
Specificity	The antibody detects endogenous levels of total DCP1A protein.
Immunogen Type	Recombinant Protein
Immunogen Description	Fusion protein corresponding to residues near the C terminal of human decapping mRNA 1A
Target Name	DCP1A
Other Names	SMIF; SMAD4IP1; HSA275986; Nbla00360
Accession No.	Swiss-Prot#: Q9NPI6NCBI Gene ID: 55802Gene Accssion: BC007439
Uniprot	Q9NPI6
GeneID	55802;
SDS-PAGE MW	63kd
Concentration	2.1mg/ml
Formulation	Rabbit IgG in pH7.4 PBS, 0.05% NaN ₃ , 40% Glycerol.
Storage	Store at -20°C

Application Details

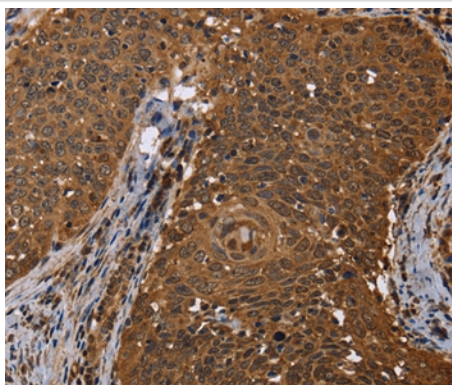
Western blotting: 1:1000-1:5000

Immunohistochemistry: 1:100-1:300

Images



Gel: 6%SDS-PAGE
Lysate: 40ug Hela cell
Primary antibody: 1/1100 dilution
Secondary antibody dilution: 1/8000
Exposure time: 10 seconds



Immunohistochemical analysis of paraffin-embedded Human cervical cancer tissue using #36402 at dilution 1/50.

Background

Decapping is a key step in general and regulated mRNA decay. The protein encoded by this gene is a decapping enzyme. This protein and another decapping enzyme form a decapping complex, which interacts with the nonsense-mediated decay factor hUpf1 and may be recruited to mRNAs containing premature termination codons. This protein also participates in the TGF-beta signaling pathway.?

Note: This product is for in vitro research use only