

## RNASE3 Antibody

Catalog No: #36432

Orders: [order@signalwayantibody.com](mailto:order@signalwayantibody.com)Support: [tech@signalwayantibody.com](mailto:tech@signalwayantibody.com)

## Description

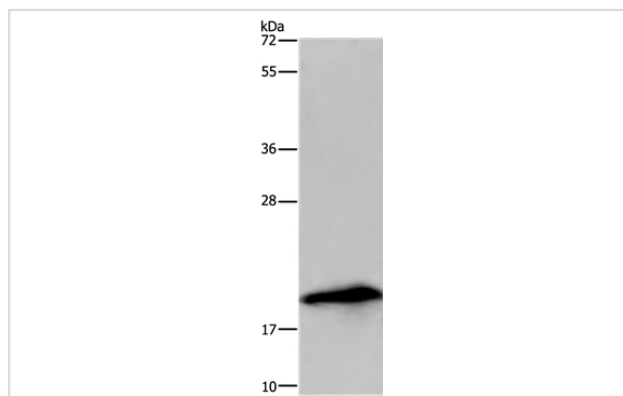
Product Name	RNASE3 Antibody
Host Species	Rabbit
Clonality	Polyclonal
Purification	Antigen affinity purification.
Applications	WB IHC
Species Reactivity	Hu
Specificity	The antibody detects endogenous levels of total RNASE3 protein.
Immunogen Type	Recombinant Protein
Immunogen Description	Fusion protein corresponding to a region derived from internal residues of human ribonuclease, RNase A family, 3
Target Name	RNASE3
Other Names	ECP; RNS3
Accession No.	Swiss-Prot#: P12724NCBI Gene ID: 6037Gene Accssion: BC096060
Uniprot	P12724
GeneID	6037;
SDS-PAGE MW	18kd
Concentration	0.9mg/ml
Formulation	Rabbit IgG in pH7.4 PBS, 0.05% NaN <sub>3</sub> , 40% Glycerol.
Storage	Store at -20°C

## Application Details

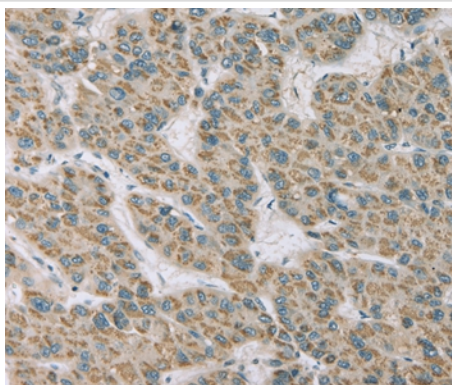
Western blotting: 1:200-1:1000

Immunohistochemistry: 1:25-1:100

## Images



Gel: 10%SDS-PAGE  
Lysate: 40ug U937 cell  
Primary antibody: 1/200 dilution  
Secondary antibody dilution: 1/8000  
Exposure time: 3 minutes



Immunohistochemical analysis of paraffin-embedded Human liver cancer tissue using #36432 at dilution 1/20.

## Background

Eosinophil Cationic Protein (ECP) also known as ribonuclease 3 is a basic protein located in the eosinophil primary matrix. In humans, the eosinophil cationic protein is encoded by the RNASE3 gene. ECP is released during degranulation of eosinophils. This protein is related to inflammation and asthma because in these cases, there are increased levels of ECP in the body. There are three glycosylated forms of ECP and consequently ECP has a range of molecular weights from 18-22 kDa

Note: This product is for in vitro research use only