

EDIL3 Antibody

Catalog No: #36435

Orders: order@signalwayantibody.comSupport: tech@signalwayantibody.com

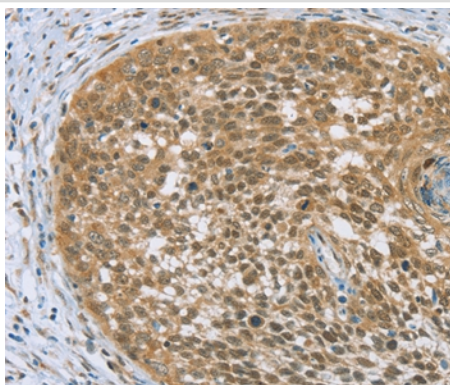
Description

Product Name	EDIL3 Antibody
Host Species	Rabbit
Clonality	Polyclonal
Purification	Antigen affinity purification.
Applications	IHC
Species Reactivity	Hu
Specificity	The antibody detects endogenous levels of total EDIL3 protein.
Immunogen Type	Recombinant Protein
Immunogen Description	Fusion protein corresponding to residues near the C terminal of human EGF-like repeats and discoidin I-like domains 3
Target Name	EDIL3
Other Names	DEL1
Accession No.	Swiss-Prot#: O43854NCBI Gene ID: 10085Gene Accssion: BC030828
Uniprot	O43854
GeneID	10085;
Concentration	0.9mg/ml
Formulation	Rabbit IgG in pH7.4 PBS, 0.05% NaN ₃ , 40% Glycerol.
Storage	Store at -20°C

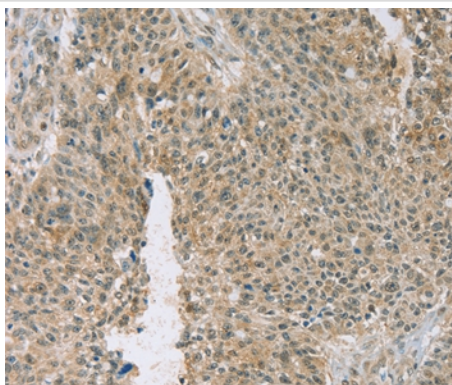
Application Details

Immunohistochemistry: 1:25-1:100

Images



Immunohistochemical analysis of paraffin-embedded Human cervical cancer tissue using #36435 at dilution 1/20.



Immunohistochemical analysis of paraffin-embedded Human ovarian cancer tissue using #36435 at dilution 1/20.

Background

The protein encoded by this gene is an integrin ligand. It plays an important role in mediating angiogenesis and may be important in vessel wall remodeling and development. It also influences endothelial cell behavior.

Note: This product is for in vitro research use only