

## ETS2 Antibody

Catalog No: #36451

Orders: [order@signalwayantibody.com](mailto:order@signalwayantibody.com)Support: [tech@signalwayantibody.com](mailto:tech@signalwayantibody.com)

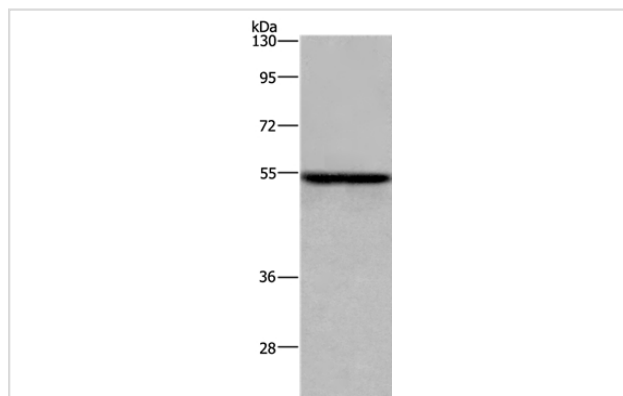
## Description

Product Name	ETS2 Antibody
Host Species	Rabbit
Clonality	Polyclonal
Purification	Antigen affinity purification.
Applications	WB
Species Reactivity	Hu
Specificity	The antibody detects endogenous levels of total ETS2 protein.
Immunogen Type	Recombinant Protein
Immunogen Description	Fusion protein corresponding to a region derived from internal residues of human v-ets avian erythroblastosis virus E26 oncogene homolog 2
Target Name	ETS2
Other Names	ETS2IT1
Accession No.	Swiss-Prot#: P15036NCBI Gene ID: 2114Gene Accssion: BC042954
Uniprot	P15036
GeneID	2114;
SDS-PAGE MW	53kd
Concentration	1.2mg/ml
Formulation	Rabbit IgG in pH7.4 PBS, 0.05% NaN <sub>3</sub> , 40% Glycerol.
Storage	Store at -20°C

## Application Details

Western blotting: 1:500-1:2000

## Images



Gel: 8%SDS-PAGE  
 Lysate: 40ug MCF-7 cell  
 Primary antibody: 1/300 dilution  
 Secondary antibody dilution: 1/8000  
 Exposure time: 1 minute

## Background

This gene encodes a transcription factor which regulates genes involved in development and apoptosis. The encoded protein is also a protooncogene

and shown to be involved in regulation of telomerase. A pseudogene of this gene is located on the X chromosome. Alternative splicing results in multiple transcript variants.

---

Note: This product is for in vitro research use only