

EZR Antibody

Catalog No: #36454

Orders: order@signalwayantibody.comSupport: tech@signalwayantibody.com

Description

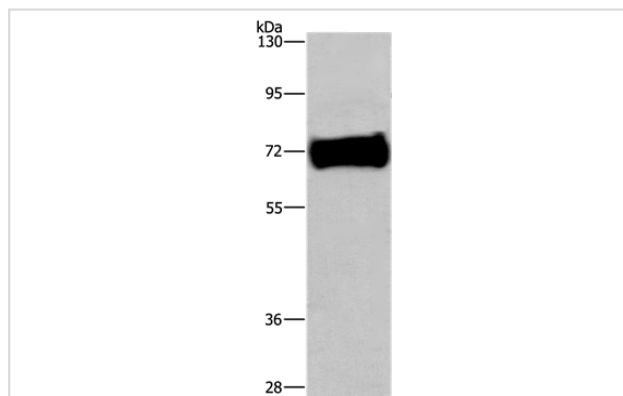
Product Name	EZR Antibody
Host Species	Rabbit
Clonality	Polyclonal
Purification	Antigen affinity purification.
Applications	WB IHC
Species Reactivity	Hu Ms
Specificity	The antibody detects endogenous levels of total EZR protein.
Immunogen Type	Recombinant Protein
Immunogen Description	Fusion protein corresponding to residues near the N terminal of human ezrin
Target Name	EZR
Other Names	CVL; CVIL; VIL2; HEL-S-105
Accession No.	Swiss-Prot#: P15311NCBI Gene ID: 7430Gene Accssion: BC013903
Uniprot	P15311
GeneID	7430;
SDS-PAGE MW	69kd
Concentration	0.7mg/ml
Formulation	Rabbit IgG in pH7.4 PBS, 0.05% NaN ₃ , 40% Glycerol.
Storage	Store at -20°C

Application Details

Western blotting: 1:500-1:2000

Immunohistochemistry: 1:25-1:100

Images



Gel: 6%SDS-PAGE

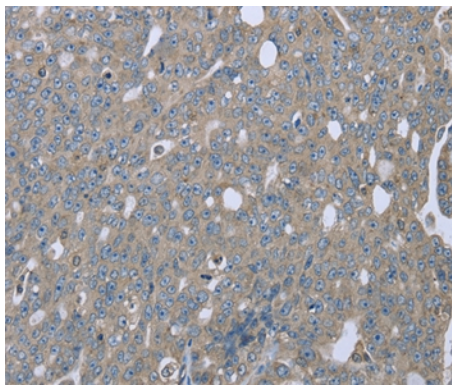
Lysates (from left to right): Mouse kidney tissue

Amount of lysate: 40ug per lane

Primary antibody: 1/200 dilution

Secondary antibody dilution: 1/8000

Exposure time: 30 seconds



Immunohistochemical analysis of paraffin-embedded Human ovarian cancer tissue using #36454 at dilution 1/20.

Background

The cytoplasmic peripheral membrane protein encoded by this gene functions as a protein-tyrosine kinase substrate in microvilli. As a member of the ERM protein family, this protein serves as an intermediate between the plasma membrane and the actin cytoskeleton. This protein plays a key role in cell surface structure adhesion, migration and organization, and it has been implicated in various human cancers. A pseudogene located on chromosome 3 has been identified for this gene. Alternatively spliced variants have also been described for this gene.

Note: This product is for in vitro research use only