

RCBTB2 antibody

Catalog No: #22125

Orders: order@signalwayantibody.comSupport: tech@signalwayantibody.com

Description

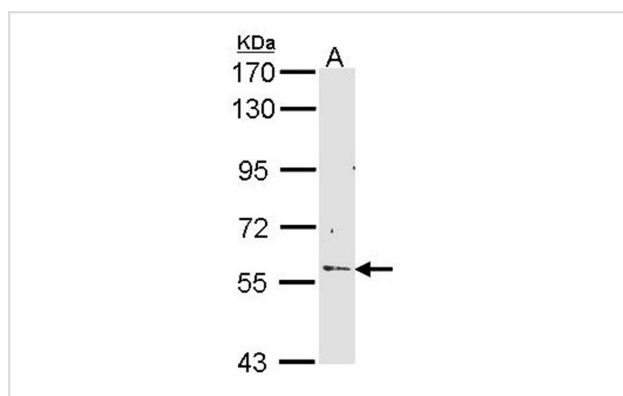
Product Name	RCBTB2 antibody
Host Species	Rabbit
Clonality	Polyclonal
Purification	Purified by antigen-affinity chromatography.
Applications	WB
Species Reactivity	Hu
Immunogen Type	Recombinant protein
Immunogen Description	Recombinant protein fragment contain a sequence corresponding to a region within amino acids 214 and 442 of Human RCBTB2
Target Name	RCBTB2
Accession No.	Swiss-Prot:O95199Gene ID:1102
Uniprot	O95199
GeneID	1102;
Concentration	0.3mg/ml
Formulation	Supplied in 0.1M Tris-buffered saline with 20% Glycerol (pH7.0). 0.01% Thimerosal was added as a preservative.
Storage	Store at -20°C for long term preservation (recommended). Store at 4°C for short term use.

Application Details

Predicted MW: 60kd

Western blotting: 1:500-1:3000

Images



Sample (30 ug of whole cell lysate)
 A: Hep G2
 7.5% SDS PAGE
 Primary antibody diluted at 1: 1000

Background

This gene encodes a member of the RCC1-related GEF family. The N-terminal half of the encoded amino acid sequence shows similarity to the regulator of chromosome condensation RCC1, which acts as a guanine nucleotide exchange factor (GEF) protein for the Ras-related GTPase Ran.

Note: This product is for in vitro research use only