

FHL1 Antibody

Catalog No: #36482



Orders: [order@signalwayantibody.com](mailto:order@signalwayantibody.com)  
Support: [tech@signalwayantibody.com](mailto:tech@signalwayantibody.com)

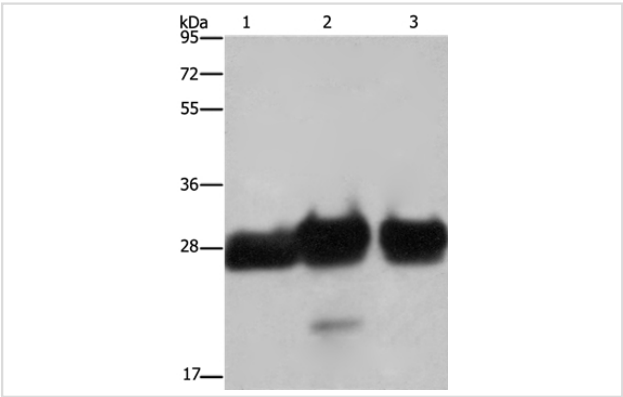
Description

Product Name	FHL1 Antibody
Host Species	Rabbit
Clonality	Polyclonal
Purification	Antigen affinity purification.
Applications	WB IHC
Species Reactivity	Hu
Specificity	The antibody detects endogenous levels of total FHL1 protein.
Immunogen Type	Recombinant Protein
Immunogen Description	Full length fusion protein
Target Name	FHL1
Other Names	KYOT; SLIM; FHL-1; FHL1A; FHL1B; FLH1A; SLIM1; XMPMA; SLIM-1; SLIMMER
Accession No.	Swiss-Prot#: Q13642NCBI Gene ID: 2273Gene Accssion: BC010998
Uniprot	Q13642
GeneID	2273;
SDS-PAGE MW	36kd
Concentration	1mg/ml
Formulation	Rabbit IgG in pH7.4 PBS, 0.05% NaN3, 40% Glycerol.
Storage	Store at -20°C

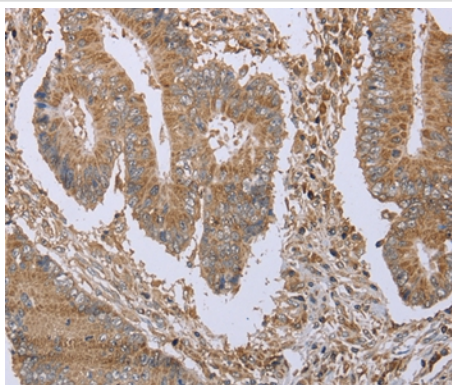
Application Details

Western blotting: 1:500-1:2000
Immunohistochemistry: 1:25-1:100

Images



Gel: 8%SDS-PAGE  
Lysates (from left to right): Human adrenal pheochromocytoma, fetal muscle and skeletal muscle tissue  
Amount of lysate: 40ug per lane  
Primary antibody: 1/500 dilution  
Secondary antibody dilution: 1/8000  
Exposure time: 5 seconds



Immunohistochemical analysis of paraffin-embedded Human colon cancer tissue using #36482 at dilution 1/20.

## Background

This gene encodes a member of the four-and-a-half-LIM-only protein family. Family members contain two highly conserved, tandemly arranged, zinc finger domains with four highly conserved cysteines binding a zinc atom in each zinc finger. Expression of these family members occurs in a cell- and tissue-specific mode and these proteins are involved in many cellular processes. Mutations in this gene have been found in patients with Emery-Dreifuss muscular dystrophy. Multiple alternately spliced transcript variants which encode different protein isoforms have been described.

Note: This product is for in vitro research use only