

FUCA1 Antibody

Catalog No: #36490

Orders: order@signalwayantibody.comSupport: tech@signalwayantibody.com

Description

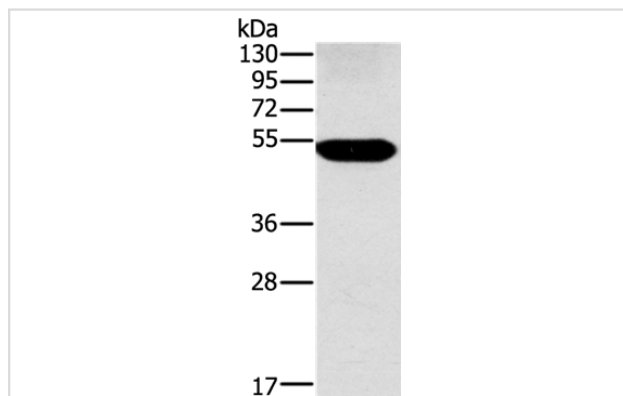
Product Name	FUCA1 Antibody
Host Species	Rabbit
Clonality	Polyclonal
Purification	Antigen affinity purification.
Applications	WB IHC
Species Reactivity	Hu
Specificity	The antibody detects endogenous levels of total FUCA1 protein.
Immunogen Type	Recombinant Protein
Immunogen Description	Fusion protein corresponding to residues near the C terminal of human fucosidase, alpha-L- 1, tissuep
Target Name	FUCA1
Other Names	FUCA
Accession No.	Swiss-Prot#: P04066NCBI Gene ID: 2517Gene Accssion: BC017338/P04066
Uniprot	P04066
GeneID	2517;
SDS-PAGE MW	54kd
Concentration	1.8mg/ml
Formulation	Rabbit IgG in pH7.4 PBS, 0.05% NaN ₃ , 40% Glycerol.
Storage	Store at -20°C

Application Details

Western blotting: 1:500-1:2000

Immunohistochemistry: 1:50-1:200

Images



Gel: 8%SDS-PAGE

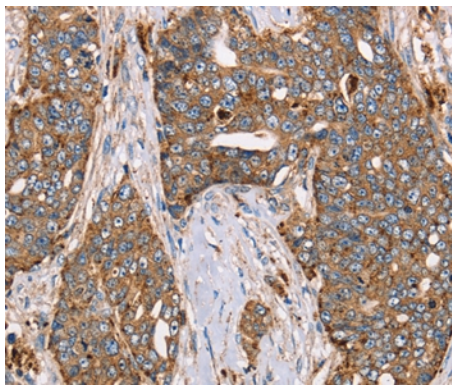
Lysates (from left to right): Human placenta tissue

Amount of lysate: 60ug per lane

Primary antibody: 1/500 dilution

Secondary antibody dilution: 1/8000

Exposure time: 2minutes



Immunohistochemical analysis of paraffin-embedded Human cervical cancer tissue using #36490 at dilution 1/30.

Background

The protein encoded by this gene is a lysosomal enzyme involved in the degradation of fucose-containing glycoproteins and glycolipids. Mutations in this gene are associated with fucosidosis (FUCA1D), which is an autosomal recessive lysosomal storage disease. A pseudogene of this locus is present on chr 2.

Note: This product is for in vitro research use only