

NEDD9 Antibody

Catalog No: #36517

Orders: order@signalwayantibody.comSupport: tech@signalwayantibody.com

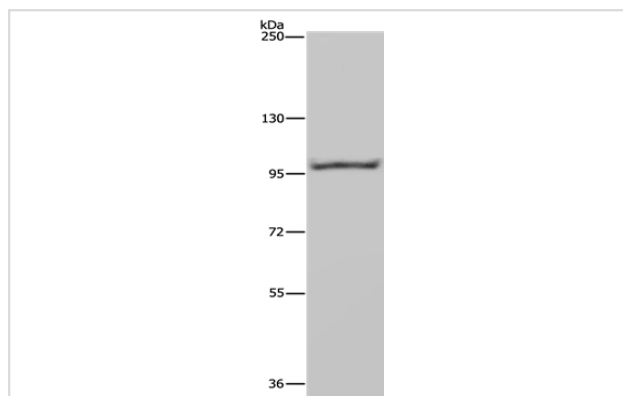
Description

Product Name	NEDD9 Antibody
Host Species	Rabbit
Clonality	Polyclonal
Purification	Antigen affinity purification.
Applications	WB
Species Reactivity	Hu
Specificity	The antibody detects endogenous levels of total NEDD9 protein.
Immunogen Type	Recombinant Protein
Immunogen Description	Full length fusion protein
Target Name	NEDD9
Other Names	CAS2; CASL; HEF1; CAS-L; CASS2
Accession No.	Swiss-Prot#: Q14511NCBI Gene ID: 4739Gene Accssion: BC020686
Uniprot	Q14511
GeneID	4739;
SDS-PAGE MW	93kd
Concentration	2.7mg/ml
Formulation	Rabbit IgG in pH7.4 PBS, 0.05% NaN ₃ , 40% Glycerol.
Storage	Store at -20°C

Application Details

Western blotting: 1:200-1:1000

Images



Gel: 6%SDS-PAGE
 Lysate: 40ug Raji cell
 Primary antibody: 1/650 dilution
 Secondary antibody dilution: 1/8000
 Exposure time: 20 seconds

Background

The protein encoded by this gene is a member of the CRK-associated substrates family. Members of this family are adhesion docking molecules that mediate protein-protein interactions for signal transduction pathways. This protein is a focal adhesion protein that acts as a scaffold to regulate

signaling complexes important in cell attachment, migration and invasion as well as apoptosis and the cell cycle. This protein has also been reported to have a role in cancer metastasis. Alternative splicing results in multiple transcript variants.

Note: This product is for in vitro research use only