

CSH1 Antibody

Catalog No: #36527

Orders: order@signalwayantibody.comSupport: tech@signalwayantibody.com

Description

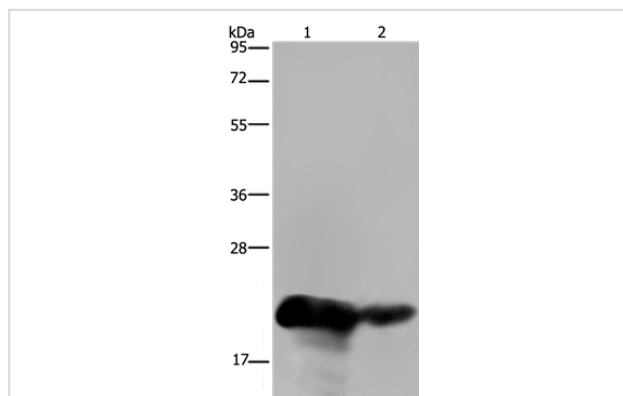
Product Name	CSH1 Antibody
Host Species	Rabbit
Clonality	Polyclonal
Purification	Antigen affinity purification.
Applications	WB IHC
Species Reactivity	Hu
Specificity	The antibody detects endogenous levels of total CSH1 protein.
Immunogen Type	Recombinant Protein
Immunogen Description	Fusion protein corresponding to a region derived from internal residues of human chorionic somatomammotropin hormone 1
Target Name	CSH1
Other Names	PL; CSA; CS-1; CSMT; hCS-1; hCS-A
Accession No.	Swiss-Prot#: P01243NCBI Gene ID: 1442Gene Accssion: BC005921/P01243
Uniprot	P0DML2
GeneID	1442;
SDS-PAGE MW	25kd
Concentration	1.8mg/ml
Formulation	Rabbit IgG in pH7.4 PBS, 0.05% NaN ₃ , 40% Glycerol.
Storage	Store at -20°C

Application Details

Western blotting: 1:500-1:2000

Immunohistochemistry: 1:50-1:200

Images



Gel: 10%SDS-PAGE

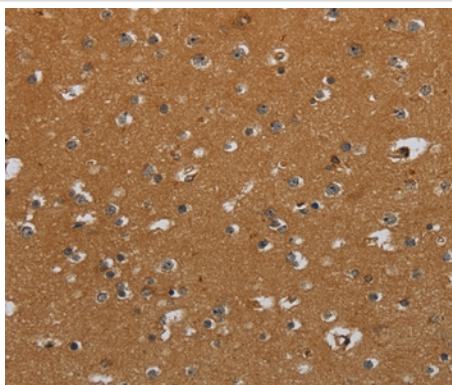
Lysates (from left to right): Human placenta and breast infiltrative duct tissue

Amount of lysate: 40ug per lane

Primary antibody: 1/200 dilution

Secondary antibody dilution: 1/8000

Exposure time: 10 seconds



Immunohistochemical analysis of paraffin-embedded Human brain tissue using #36527 at dilution 1/40.

Background

The protein encoded by this gene is a member of the somatotropin/prolactin family of hormones and plays an important role in growth control. The gene is located at the growth hormone locus on chromosome 17 along with four other related genes in the same transcriptional orientation; an arrangement which is thought to have evolved by a series of gene duplications. Although the five genes share a remarkably high degree of sequence identity, they are expressed selectively in different tissues. Alternative splicing generates additional isoforms of each of the five growth hormones, leading to further diversity and potential for specialization.

Note: This product is for in vitro research use only