

HSD17B8 Antibody

Catalog No: #36528



Orders: order@signalwayantibody.com
Support: tech@signalwayantibody.com

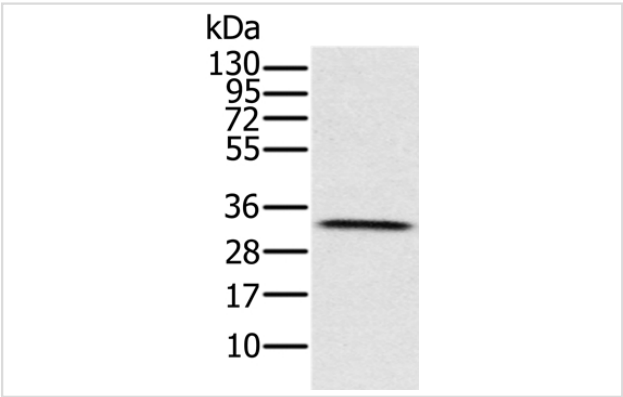
Description

Product Name	HSD17B8 Antibody
Host Species	Rabbit
Clonality	Polyclonal
Purification	Antigen affinity purification.
Applications	WB IHC
Species Reactivity	Hu
Specificity	The antibody detects endogenous levels of total HSD17B8 protein.
Immunogen Type	Recombinant Protein
Immunogen Description	Full length fusion protein
Target Name	HSD17B8
Other Names	KE6; FABG; HKE6; FABGL; RING2; H2-KE6; SDR30C1; D6S2245E; dJ1033B10.9
Accession No.	Swiss-Prot#: Q92506NCBI Gene ID: 7923Gene Accssion: BC008185/Q92506
Uniprot	Q92506
GeneID	7923;
SDS-PAGE MW	27kd
Concentration	2.8mg/ml
Formulation	Rabbit IgG in pH7.4 PBS, 0.05% NaN3, 40% Glycerol.
Storage	Store at -20°C

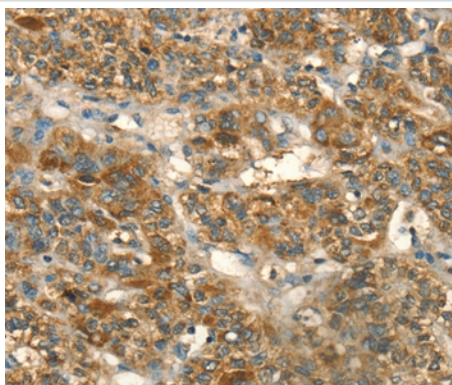
Application Details

Western blotting: 1:500-1:2000
Immunohistochemistry: 1:50-1:200

Images



Gel: 12%SDS-PAGE
Lysates (from left to right): Human testis tissue
Amount of lysate: 40ug per lane
Primary antibody: 1/650 dilution
Secondary antibody dilution: 1/8000
Exposure time: 20 seconds



Immunohistochemical analysis of paraffin-embedded Human liver cancer tissue using #36528 at dilution 1/55.

Background

In mice, the Ke6 protein is a 17-beta-hydroxysteroid dehydrogenase that can regulate the concentration of biologically active estrogens and androgens. It is preferentially an oxidative enzyme and inactivates estradiol, testosterone, and dihydrotestosterone. However, the enzyme has some reductive activity and can synthesize estradiol from estrone. The protein encoded by this gene is similar to Ke6 and is a member of the short-chain dehydrogenase superfamily. An alternatively spliced transcript of this gene has been detected, but the full-length nature of this variant has not been determined.

Note: This product is for in vitro research use only