

IRGM Antibody

Catalog No: #36558



Orders: order@signalwayantibody.com
Support: tech@signalwayantibody.com

Description

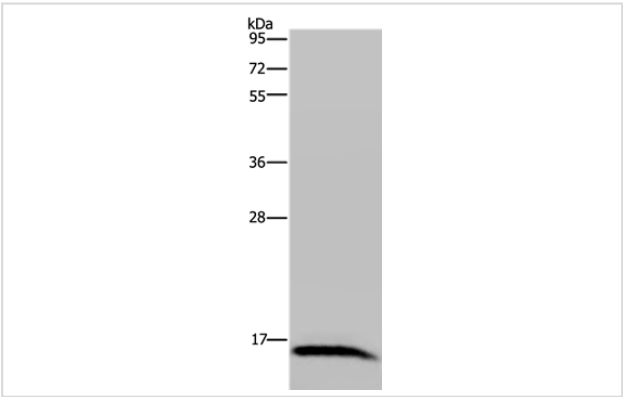
Product Name	IRGM Antibody
Host Species	Rabbit
Clonality	Polyclonal
Purification	Antigen affinity purification.
Applications	WB IHC
Species Reactivity	Hu
Specificity	The antibody detects endogenous levels of total IRGM protein.
Immunogen Type	Recombinant Protein
Immunogen Description	Full length fusion protein
Target Name	IRGM
Other Names	IFI1; IRGM1; LRG47; LRG-47
Accession No.	Swiss-Prot#: A1A4Y4NCBI Gene ID: 345611Gene Accssion: BC128168
Uniprot	A1A4Y4
GeneID	345611;
SDS-PAGE MW	20kd
Concentration	2.8mg/ml
Formulation	Rabbit IgG in pH7.4 PBS, 0.05% NaN3, 40% Glycerol.
Storage	Store at -20°C

Application Details

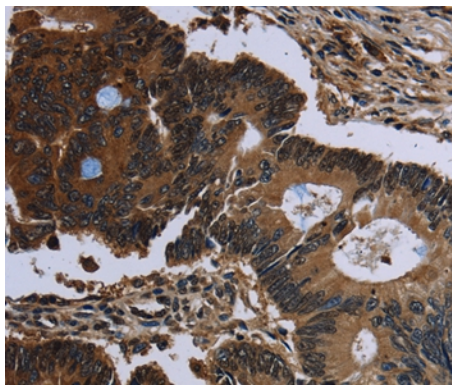
Western blotting: 1:200-1:1000

Immunohistochemistry: 1:50-1:200

Images



Gel: 10%SDS-PAGE
Lysate: 40ug Human hepatocellular carcinoma tissuePrimary
antibody: 1/200 dilution
Secondary antibody dilution: 1/8000
Exposure time: 5 minutes



Immunohistochemical analysis of paraffin-embedded Human colon cancer tissue using #36558 at dilution 1/60.

Background

This gene encodes a member of the p47 immunity-related GTPase family. The encoded protein may play a role in the innate immune response by regulating autophagy formation in response to intracellular pathogens. Polymorphisms that affect the normal expression of this gene are associated with a susceptibility to Crohn's disease and tuberculosis.

Note: This product is for in vitro research use only