

LEPREL2 Antibody

Catalog No: #36584



Orders: order@signalwayantibody.com
Support: tech@signalwayantibody.com

Description

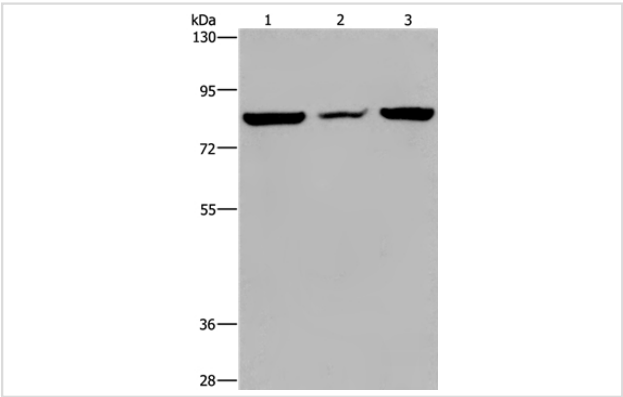
Product Name	LEPREL2 Antibody
Host Species	Rabbit
Clonality	Polyclonal
Purification	Antigen affinity purification.
Applications	WB IHC
Species Reactivity	Hu Ms
Specificity	The antibody detects endogenous levels of total LEPREL2 protein.
Immunogen Type	Recombinant Protein
Immunogen Description	Fusion protein corresponding to a region derived from internal residues of human leprecan-like 2
Target Name	LEPREL2
Other Names	GRCB; P3H3; HSU47926
Accession No.	Swiss-Prot#: Q8IVL6NCBI Gene ID: 10536Gene Accssion: BC017217
Uniprot	Q8IVL6
GeneID	10536;
SDS-PAGE MW	82kd
Concentration	2.2mg/ml
Formulation	Rabbit IgG in pH7.4 PBS, 0.05% NaN3, 40% Glycerol.
Storage	Store at -20°C

Application Details

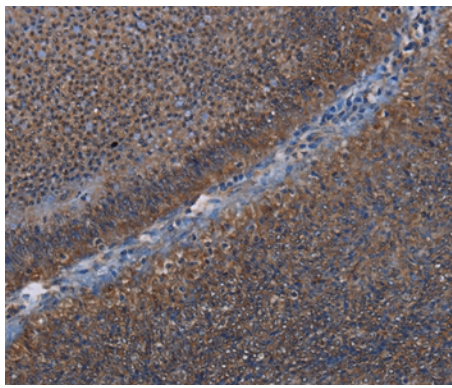
Western blotting: 1:500-1:2000

Immunohistochemistry: 1:50-1:200

Images



Gel: 6%SDS-PAGE
Lysates (from left to right): A549 cell, mouse heart tissue and Hela cell
Amount of lysate: 40ug per lane
Primary antibody: 1/300 dilution
Secondary antibody dilution: 1/8000
Exposure time: 20 seconds



Immunohistochemical analysis of paraffin-embedded Human rectal cancer tissue using #36584 at dilution 1/50.

Background

The protein encoded by this gene belongs to the leprecan family of proteoglycans, which function as collagen prolyl hydroxylases that are required for proper collagen biosynthesis, folding and assembly. This protein, like other family members, is thought to reside in the endoplasmic reticulum. Epigenetic inactivation of this gene is associated with breast and other cancers, suggesting that it may function as a tumor suppressor.

Note: This product is for in vitro research use only