

LYN Antibody

Catalog No: #36592

Orders: order@signalwayantibody.comSupport: tech@signalwayantibody.com

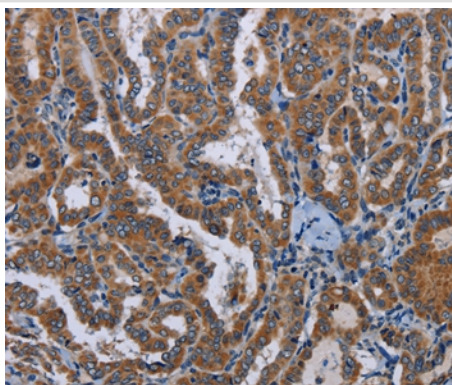
Description

Product Name	LYN Antibody
Host Species	Rabbit
Clonality	Polyclonal
Purification	Antigen affinity purification.
Applications	IHC
Species Reactivity	Hu
Specificity	The antibody detects endogenous levels of total LYN protein.
Immunogen Type	Recombinant Protein
Immunogen Description	Fusion protein corresponding to a region derived from internal residues of human v-yes-1 Yamaguchi sarcoma viral related oncogene homolog
Target Name	LYN
Other Names	JTK8; p53Lyn; p56Lyn
Accession No.	Swiss-Prot#: P07948NCBI Gene ID: 4067Gene Accssion: BC126456
Uniprot	P07948
GeneID	4067;
Concentration	0.3mg/ml
Formulation	Rabbit IgG in pH7.4 PBS, 0.05% NaN ₃ , 40% Glycerol.
Storage	Store at -20°C

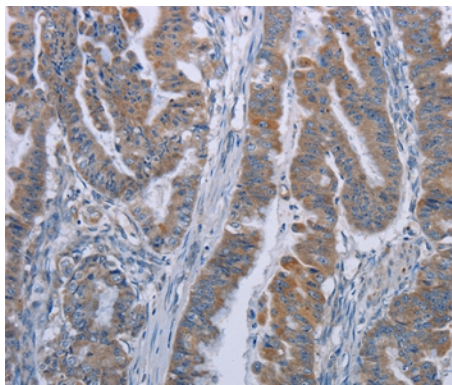
Application Details

Immunohistochemistry: 1:25-1:100

Images



Immunohistochemical analysis of paraffin-embedded Human thyroid cancer tissue using #36592 at dilution 1/20.



Immunohistochemical analysis of paraffin-embedded Human esophagus cancer tissue using #36592 at dilution 1/20.

Background

This gene encodes a tyrosine protein kinase, which maybe involved in the regulation of mast cell degranulation, and erythroid differentiation. Alternatively spliced transcript variants encoding different isoforms have been found for this gene.?

Note: This product is for in vitro research use only