

MAGEA8 Antibody

Catalog No: #36595

Orders: order@signalwayantibody.comSupport: tech@signalwayantibody.com

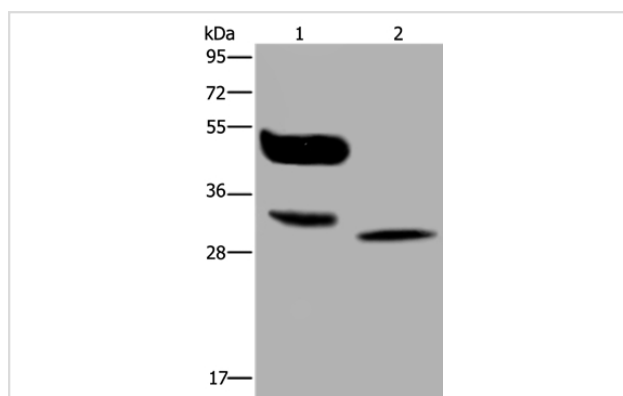
Description

| | |
|-----------------------|---|
| Product Name | MAGEA8 Antibody |
| Host Species | Rabbit |
| Clonality | Polyclonal |
| Purification | Antigen affinity purification. |
| Applications | WB |
| Species Reactivity | Hu |
| Specificity | The antibody detects endogenous levels of total MAGEA8 protein. |
| Immunogen Type | Recombinant Protein |
| Immunogen Description | Full length fusion protein |
| Target Name | MAGEA8 |
| Other Names | CT1.8; MAGE8 |
| Accession No. | Swiss-Prot#: P43361NCBI Gene ID: 4107Gene Accssion: BC002455 |
| Uniprot | P43361 |
| GeneID | 4107; |
| SDS-PAGE MW | 35kd |
| Concentration | 1.8mg/ml |
| Formulation | Rabbit IgG in pH7.4 PBS, 0.05% NaN ₃ , 40% Glycerol. |
| Storage | Store at -20°C |

Application Details

Western blotting: 1:500-1:2000

Images



Gel: 10%SDS-PAGE

Lysates (from left to right): A375 cell and human lung cancer tissue

Amount of lysate: 40ug per lane

Primary antibody: 1/400 dilution

Secondary antibody dilution: 1/8000

Exposure time: 30 seconds

Background

This gene is a member of the MAGEA gene family. The members of this family encode proteins with 50 to 80% sequence identity to each other. The promoters and first exons of the MAGEA genes show considerable variability, suggesting that the existence of this gene family enables the same

function to be expressed under different transcriptional controls. The MAGEA genes are clustered at chromosomal location Xq28. They have been implicated in some hereditary disorders, such as dyskeratosis congenita. Multiple alternatively spliced variants, encoding the same protein, have been identified.?

Note: This product is for in vitro research use only