

MDH1 Antibody

Catalog No: #36606

Orders: order@signalwayantibody.comSupport: tech@signalwayantibody.com

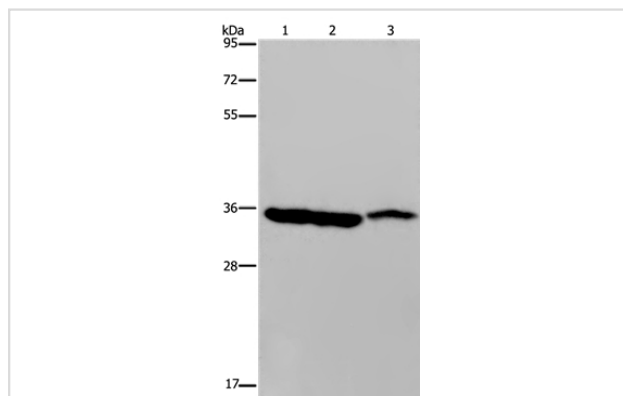
Description

Product Name	MDH1 Antibody
Host Species	Rabbit
Clonality	Polyclonal
Purification	Antigen affinity purification.
Applications	WB
Species Reactivity	Hu Ms
Specificity	The antibody detects endogenous levels of total MDH1 protein.
Immunogen Type	Recombinant Protein
Immunogen Description	Fusion protein corresponding to a region derived from internal residues of human malate dehydrogenase 1, NAD
Target Name	MDH1
Other Names	MDHA; MOR2; MDH-s; HEL-S-32; MGC:1375
Accession No.	Swiss-Prot#: P40925NCBI Gene ID: 4190Gene Accssion: BC001484
Uniprot	P40925
GeneID	4190;
SDS-PAGE MW	36kd
Concentration	2.6mg/ml
Formulation	Rabbit IgG in pH7.4 PBS, 0.05% NaN ₃ , 40% Glycerol.
Storage	Store at -20°C

Application Details

Western blotting: 1:500-1:2000

Images



Gel: 8%SDS-PAGE

Lysates (from left to right): Mouse heart, liver and stomach tissue

Amount of lysate: 40ug per lane

Primary antibody: 1/500 dilution

Secondary antibody dilution: 1/8000

Exposure time: 3 seconds

Background

Malate dehydrogenase catalyzes the reversible oxidation of malate to oxaloacetate, utilizing the NAD/NADH cofactor system in the citric acid cycle.

The protein encoded by this gene is localized to the cytoplasm and may play pivotal roles in the malate-aspartate shuttle that operates in the metabolic coordination between cytosol and mitochondria. Alternatively spliced transcript variants encoding distinct isoforms have been found for this gene.

Note: This product is for in vitro research use only