

MT3 Antibody

Catalog No: #36609

Orders: order@signalwayantibody.comSupport: tech@signalwayantibody.com

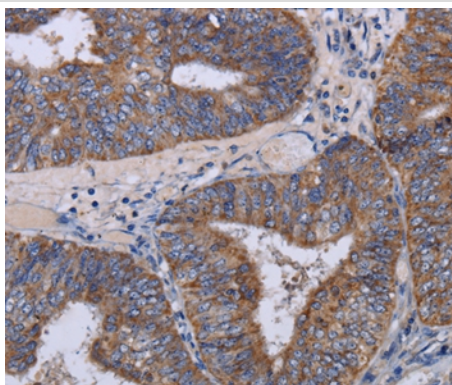
Description

Product Name	MT3 Antibody
Host Species	Rabbit
Clonality	Polyclonal
Purification	Antigen affinity purification.
Applications	IHC
Species Reactivity	Hu
Specificity	The antibody detects endogenous levels of total MT3 protein.
Immunogen Type	Recombinant Protein
Immunogen Description	Full length fusion protein
Target Name	MT3
Other Names	GIF; GIFB; GRIF; ZnMT3
Accession No.	Swiss-Prot#: P25713NCBI Gene ID: 4504Gene Accssion: BC013081
Uniprot	P25713
GeneID	4504;
Concentration	2.1mg/ml
Formulation	Rabbit IgG in pH7.4 PBS, 0.05% NaN ₃ , 40% Glycerol.
Storage	Store at -20°C

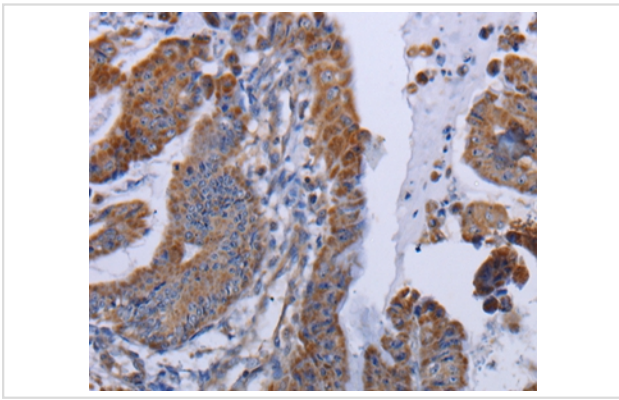
Application Details

Immunohistochemistry: 1:50-1:200

Images



Immunohistochemical analysis of paraffin-embedded Human colon cancer tissue using #36609 at dilution 1/50.



Immunohistochemical analysis of paraffin-embedded Human esophagus cancer tissue using #36609 at dilution 1/50.

Background

Metallothionein (MT) is a sulfhydryl- and cysteine-rich protein found in micro-organisms, plants and all invertebrate and vertebrate animals. Metallothioneins are a group of ubiquitous low-molecular-weight proteins that have functional roles in cell growth, repair and differentiation. Metallothionein are implicated primarily in metal ion detoxification as they are essential for the protection of cells against the toxicity of cadmium, mercury and copper. Metallothioneins are known to be broadly expressed in heart, liver, kidney, breast and testis tissue. Metallothionein 3, also known as MT-3 or GIFB (growth inhibitory factor), is a 68 amino acid protein that belongs to the type 1 family and Metallothionein superfamily. While highly expressed in astrocytes of the normal human brain, Metallothionein 3 expression is reduced in the brains of patients with Alzheimer disease.

Note: This product is for in vitro research use only