

PABPC1 Antibody

Catalog No: #36610

Orders: order@signalwayantibody.comSupport: tech@signalwayantibody.com

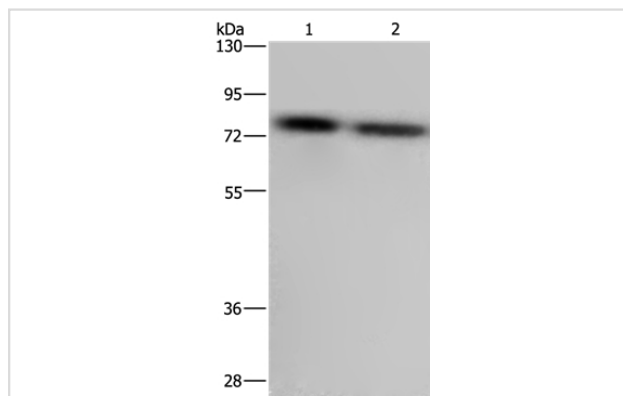
Description

Product Name	PABPC1 Antibody
Host Species	Rabbit
Clonality	Polyclonal
Purification	Antigen affinity purification.
Applications	WB
Species Reactivity	Hu
Specificity	The antibody detects endogenous levels of total PABPC1 protein.
Immunogen Type	Recombinant Protein
Immunogen Description	Fusion protein corresponding to a region derived from internal residues of human poly(A) binding protein, cytoplasmic 1
Target Name	PABPC1
Other Names	PAB1; PABP; PABP1; PABPC2; PABPL1
Accession No.	Swiss-Prot#: P11940NCBI Gene ID: 26986Gene Accssion: BC015958
Uniprot	P11940
GeneID	26986;
SDS-PAGE MW	71kd
Concentration	2.9mg/ml
Formulation	Rabbit IgG in pH7.4 PBS, 0.05% NaN ₃ , 40% Glycerol.
Storage	Store at -20°C

Application Details

Western blotting: 1:200-1:1000

Images



Gel: 8%SDS-PAGE
 Lysates (from left to right): LoVo and Hela cell
 Amount of lysate: 40ug per lane
 Primary antibody: 1/500 dilution
 Secondary antibody dilution: 1/8000
 Exposure time: 3 seconds

Background

This gene encodes a poly(A) binding protein. The protein shuttles between the nucleus and cytoplasm and binds to the 3' poly(A) tail of eukaryotic

messenger RNAs via RNA-recognition motifs. The binding of this protein to poly(A) promotes ribosome recruitment and translation initiation; it is also required for poly(A) shortening which is the first step in mRNA decay. The gene is part of a small gene family including three protein-coding genes and several pseudogenes.

Note: This product is for in vitro research use only