

TROVE2 antibody

Catalog No: #22139

Orders: order@signalwayantibody.com

Support: tech@signalwayantibody.com

Description

Product Name	TROVE2 antibody
Host Species	Rabbit
Clonality	Polyclonal
Purification	Purified by antigen-affinity chromatography.
Applications	WB IHC
Species Reactivity	Hu
Immunogen Type	Recombinant protein
Immunogen Description	Recombinant protein fragment contain a sequence corresponding to a region within amino acids 178 and 429 of Human TROVE2
Target Name	TROVE2
Other Names	RO60; SSA2
Accession No.	Swiss-Prot:P10155Gene ID:6738
Uniprot	P10155
GeneID	6738;
Concentration	0.2mg/ml
Formulation	Supplied in 0.1M Tris-buffered saline with 10% Glycerol (pH7.0). 0.01% Thimerosal was added as a preservative.
Storage	Store at -20°C for long term preservation (recommended). Store at 4°C for short term use.

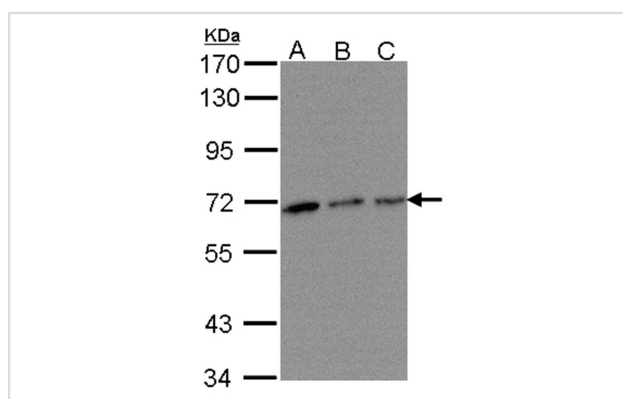
Application Details

Predicted MW: 61kd

Western blotting: 1:500-1:3000

Immunohistochemistry: 1:100-1:250

Images



Sample(30 ug of whole cell lysate)

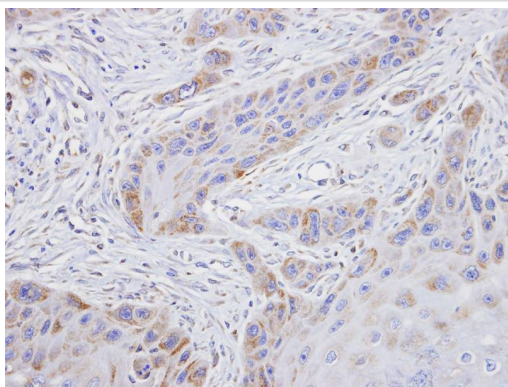
A: 293T

B: A431

C: H1299

7.5% SDS PAGE

Primary antibody diluted at 1: 500



Immunohistochemical analysis of paraffin-embedded SCC15 xenograft, using TROVE2 antibody at 1: 100 dilution.

Background

RNA-binding protein that binds to several small cytoplasmic RNA molecules known as Y RNAs. May stabilize these RNAs from degradation.

Note: This product is for in vitro research use only