

## MTUS1 Antibody

Catalog No: #36626

Orders: [order@signalwayantibody.com](mailto:order@signalwayantibody.com)Support: [tech@signalwayantibody.com](mailto:tech@signalwayantibody.com)

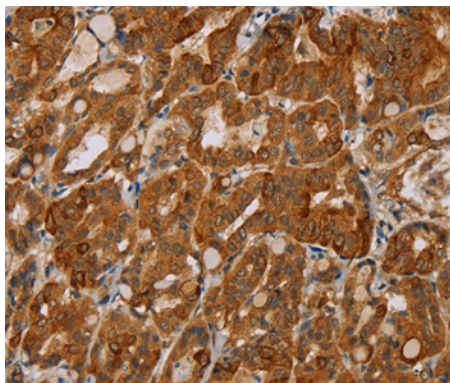
## Description

Product Name	MTUS1 Antibody
Host Species	Rabbit
Clonality	Polyclonal
Purification	Antigen affinity purification.
Applications	IHC
Species Reactivity	Hu
Specificity	The antibody detects endogenous levels of total MTUS1 protein.
Immunogen Type	Recombinant Protein
Immunogen Description	Full length fusion protein
Target Name	MTUS1
Other Names	ATBP; ATIP; ICIS; MP44; MTSG1
Accession No.	Swiss-Prot#: Q9ULD2NCBI Gene ID: 57509Gene Accssion: BC033842/Q9ULD2
Uniprot	Q9ULD2
GeneID	57509;
Concentration	2.4mg/ml
Formulation	Rabbit IgG in pH7.4 PBS, 0.05% NaN <sub>3</sub> , 40% Glycerol.
Storage	Store at -20°C

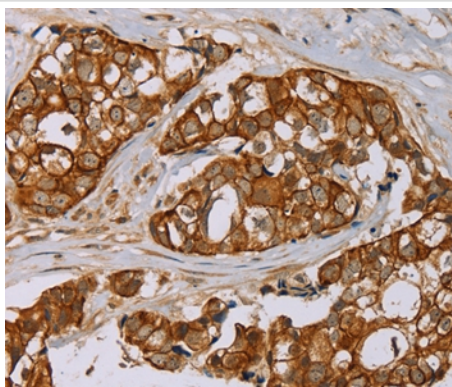
## Application Details

Immunohistochemistry: 1:50-1:200

## Images



Immunohistochemical analysis of paraffin-embedded Human thyroid cancer tissue using #36626 at dilution 1/40.



Immunohistochemical analysis of paraffin-embedded Human breast cancer tissue using #36626 at dilution 1/40.

## Background

This gene encodes a protein which contains a C-terminal domain able to interact with the angiotension II (AT2) receptor and a large coiled-coil region allowing dimerization. Multiple alternatively spliced transcript variants encoding different isoforms have been found for this gene. One of the transcript variants has been shown to encode a mitochondrial protein that acts as a tumor suppressor and participates in AT2 signaling pathways.?

Note: This product is for in vitro research use only