

## PLEKHG6 Antibody

Catalog No: #36627

Orders: [order@signalwayantibody.com](mailto:order@signalwayantibody.com)Support: [tech@signalwayantibody.com](mailto:tech@signalwayantibody.com)

## Description

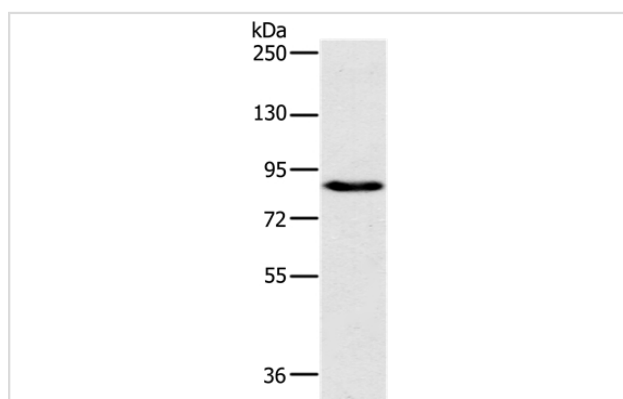
Product Name	PLEKHG6 Antibody
Host Species	Rabbit
Clonality	Polyclonal
Purification	Antigen affinity purification.
Applications	WB IHC
Species Reactivity	Hu
Specificity	The antibody detects endogenous levels of total PLEKHG6 protein.
Immunogen Type	Recombinant Protein
Immunogen Description	Fusion protein corresponding to a region derived from internal residues of human pleckstrin homology domain containing, family G (with RhoGef domain) member 6
Target Name	PLEKHG6
Other Names	MyoGEF
Accession No.	Swiss-Prot#: Q3KR16NCBI Gene ID: 55200Gene Accssion: BC105961/Q3KR16
Uniprot	Q3KR16
GeneID	55200;
SDS-PAGE MW	89kd
Concentration	2.4mg/ml
Formulation	Rabbit IgG in pH7.4 PBS, 0.05% NaN <sub>3</sub> , 40% Glycerol.
Storage	Store at -20°C

## Application Details

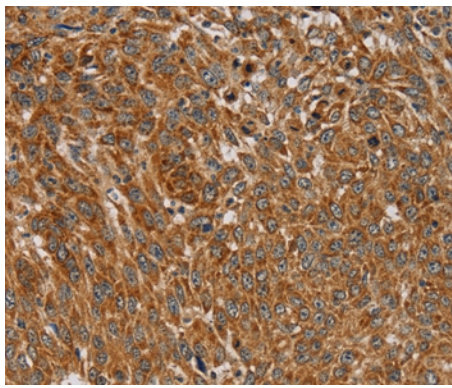
Western blotting: 1:500-1:2000

Immunohistochemistry: 1:100-1:300

## Images



Gel: 6%SDS-PAGE  
Lysate: 40ug 231 cell  
Primary antibody: 1/800 dilution  
Secondary antibody dilution: 1/8000  
Exposure time: 10 seconds



Immunohistochemical analysis of paraffin-embedded Human lung cancer tissue using #36627 at dilution 1/45.

## Background

PLEKHG6 functions as a guanine nucleotide exchange factor activating the small GTPase RHOA, which, in turn, induces myosin filament formation. It activates RHOG but not activate RAC1, or to a much lower extent than RHOA and RHOG. Part of a functional unit, involving MyoGEF, MYH10 and RHOA, at the cleavage furrow to advance furrow ingression during cytokinesis. In epithelial cells, required for the formation of microvilli and membrane ruffles on the apical pole. Along with EZR, required for normal macropinocytosis.

Note: This product is for in vitro research use only