

IVD antibody

Catalog No: #22140



Orders: order@signalwayantibody.com
Support: tech@signalwayantibody.com

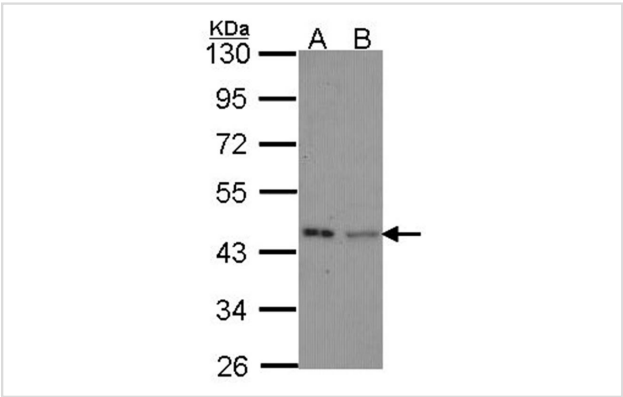
Description

Product Name	IVD antibody
Host Species	Rabbit
Clonality	Polyclonal
Purification	Purified by antigen-affinity chromatography.
Applications	WB IHC IF
Species Reactivity	Hu
Immunogen Type	Recombinant protein
Immunogen Description	Recombinant protein fragment contain a sequence corresponding to a region within amino acids 1 and 192 of IVD
Target Name	IVD
Accession No.	Swiss-Prot:P26440Gene ID:3712
Uniprot	P26440
GeneID	3712;
Concentration	1mg/ml
Formulation	Supplied in 0.1M Tris-buffered saline with 20% Glycerol (pH7.0). 0.01% Thimerosal was added as a preservative.
Storage	Store at -20°C for long term preservation (recommended). Store at 4°C for short term use.

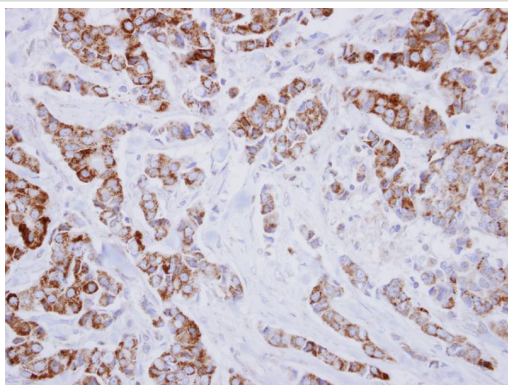
Application Details

Predicted MW: 46kd
Immunohistochemistry: 1:100-1:250
Immunofluorescence: 1:100-1:200

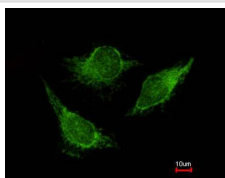
Images



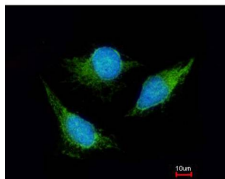
Sample (30 ug of whole cell lysate)
A: Hela
B: JurKat
10% SDS PAGE
Primary antibody diluted at 1: 1000



Immunohistochemical analysis of paraffin-embedded Breast ca, using IVD antibody at 1: 250 dilution.



Costained with Hoechst 33342



Immunofluorescence analysis of methanol-fixed HeLa, using IVD antibody at 1: 200 dilution.

Background

Isovaleryl-CoA dehydrogenase (IVD) is a mitochondrial matrix enzyme that catalyzes the third step in leucine catabolism. The genetic deficiency of IVD results in an accumulation of isovaleric acid, which is toxic to the central nervous system and leads to isovaleric acidemia. [provided by RefSeq]

Note: This product is for in vitro research use only