

NDUFA6 Antibody

Catalog No: #36639

Orders: order@signalwayantibody.comSupport: tech@signalwayantibody.com

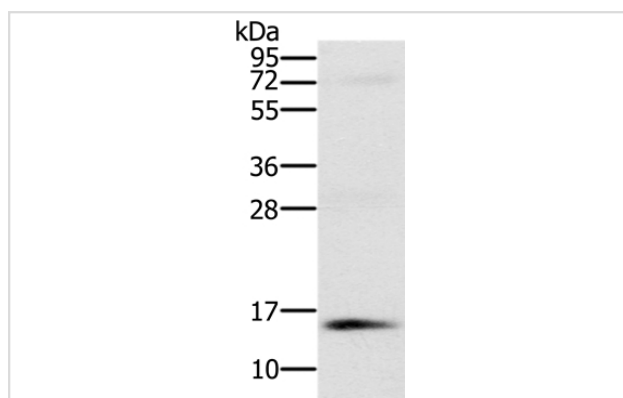
Description

Product Name	NDUFA6 Antibody
Host Species	Rabbit
Clonality	Polyclonal
Purification	Antigen affinity purification.
Applications	WB
Species Reactivity	Hu
Specificity	The antibody detects endogenous levels of total NDUFA6 protein.
Immunogen Type	Recombinant Protein
Immunogen Description	Full length fusion protein
Target Name	NDUFA6
Other Names	B14; LYRM6; CI-B14; NADHB14
Accession No.	Swiss-Prot#: P56556NCBI Gene ID: 4700Gene Accssion: BC002772/P56556
Uniprot	P56556
GeneID	4700;
SDS-PAGE MW	18kd
Concentration	1.6mg/ml
Formulation	Rabbit IgG in pH7.4 PBS, 0.05% NaN ₃ , 40% Glycerol.
Storage	Store at -20°C

Application Details

Western blotting: 1:200-1:1000

Images



Gel: 10%SDS-PAGE

Lysates (from left to right): Human normal kidney tissue

Amount of lysate: 40ug per lane

Primary antibody: 1/250 dilution

Secondary antibody dilution: 1/8000

Exposure time: 1 minute

Background

NDUFA6 (NADH dehydrogenase (ubiquinone) 1 alpha subcomplex, 6), also known as LYRM6 (LYR motif-containing protein 6), NADHB14 or B14, is a 128 amino acid protein that localizes to the matrix side of the mitochondrial membrane and belongs to the complex I LYR family. Existing as a subunit

of the multi-protein membrane respiratory chain NADH dehydrogenase complex (Complex I), NDUFA6 functions as an accessory protein that facilitates the transfer of electrons from NADH to the respiratory chain.

Note: This product is for in vitro research use only