

# NPM3 Antibody

Catalog No: #36658



Orders: [order@signalwayantibody.com](mailto:order@signalwayantibody.com)  
Support: [tech@signalwayantibody.com](mailto:tech@signalwayantibody.com)

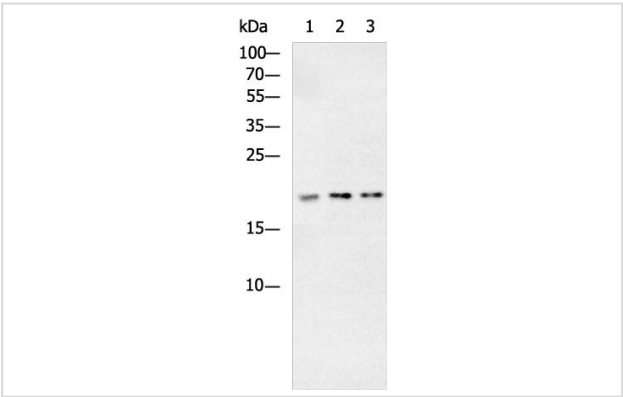
## Description

Product Name	NPM3 Antibody
Host Species	Rabbit
Clonality	Polyclonal
Purification	Antigen affinity purification.
Applications	WB IHC
Species Reactivity	Human; Mouse
Specificity	The antibody detects endogenous levels of total NPM3 protein.
Immunogen Type	Recombinant Protein
Immunogen Description	Fusion protein of human NPM3
Target Name	NPM3
Other Names	PORMIN; TMEM123
Accession No.	Swiss-Prot#: O75607NCBI Gene ID: 10360Gene Accssion: BC054868/O75607
Uniprot	O75607
GeneID	10360;
SDS-PAGE MW	19kd
Concentration	0.7 mg/ml
Formulation	Rabbit IgG in pH7.4 PBS, 0.05% NaN3, 40% Glycerol.
Storage	Store at -20°C

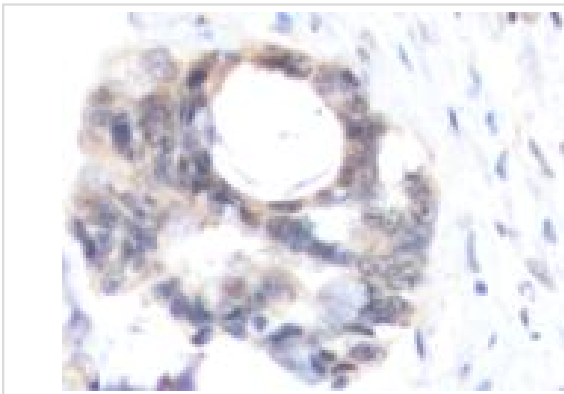
## Application Details

WB 1:1000 - 1:5000;  
IHC 1:50 - 1:200;

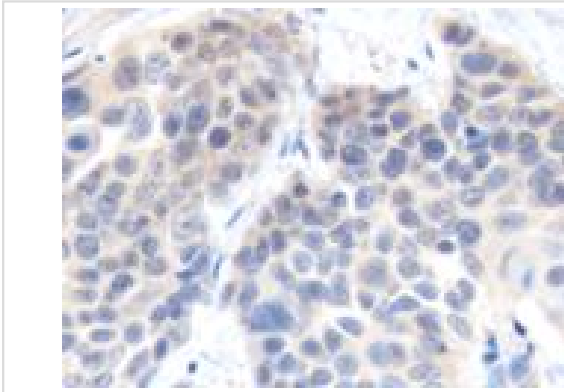
## Images



Gel: 10% SDS-PAGE  
Lysate: 10 ug  
Lane 1-3: Raji, K562, HeLa cell lysates  
Primary antibody: at dilution 1/1100  
Secondary antibody: at 1/20000 dilution  
Exposure time: 2 seconds (Detected by Chemiluminescence Imager)



The image is immunohistochemistry of paraffin-embedded Human prostate cancer tissue using NPM3 Antibody at dilution 1/50. (Original magnification:  $\times 200$ )



The image is immunohistochemistry of paraffin-embedded Human esophagus cancer tissue using NPM3 Antibody at dilution 1/50. (Original magnification:  $\times 200$ )

## Background

The protein encoded by this gene is related to the nuclear chaperone phosphoproteins, nucleoplasmin and nucleophosmin. This protein is strongly expressed in diverse cell types where it localizes primarily to the nucleus. Based on its similarity to nucleoplasmin and nucleophosmin, this protein likely functions as a molecular chaperone in the cell nucleus.

**Note:** This product is for in vitro research use only