

## NUMB Antibody

Catalog No: #36663

Orders: [order@signalwayantibody.com](mailto:order@signalwayantibody.com)Support: [tech@signalwayantibody.com](mailto:tech@signalwayantibody.com)

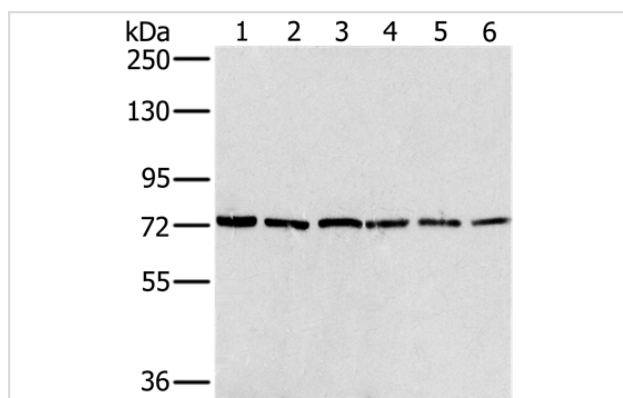
## Description

Product Name	NUMB Antibody
Host Species	Rabbit
Clonality	Polyclonal
Purification	Antigen affinity purification.
Applications	WB
Species Reactivity	Hu Ms
Specificity	The antibody detects endogenous levels of total NUMB protein.
Immunogen Type	Recombinant Protein
Immunogen Description	Fusion protein corresponding to residues near the N terminal of human numb homolog (Drosophila)
Target Name	NUMB
Other Names	S171; C14orf41; c14_5527
Accession No.	Swiss-Prot#: P49757NCBI Gene ID: 8650Gene Accssion: BC020788/P49757
Uniprot	P49757
GeneID	8650;
SDS-PAGE MW	71kd
Concentration	0.9mg/ml
Formulation	Rabbit IgG in pH7.4 PBS, 0.05% NaN <sub>3</sub> , 40% Glycerol.
Storage	Store at -20°C

## Application Details

Western blotting: 1:200-1:1000

## Images



Gel: 6%SDS-PAGE  
 Lysates (from left to right): K562, hela, skov3, NIH/3T3 and Raji cell, human testis tissue  
 Amount of lysate: 40ug per lane  
 Primary antibody: 1/200 dilution  
 Secondary antibody dilution: 1/8000  
 Exposure time: 2 minutes

## Background

The protein encoded by this gene plays a role in the determination of cell fates during development. The encoded protein, whose degradation is induced in a proteasome-dependent manner by MDM2, is a membrane-bound protein that has been shown to associate with EPS15, LNX1, and

NOTCH1. Four transcript variants encoding different isoforms have been found for this gene.

---

Note: This product is for in vitro research use only