

## SERPINB2 Antibody

Catalog No: #36679

Orders: [order@signalwayantibody.com](mailto:order@signalwayantibody.com)Support: [tech@signalwayantibody.com](mailto:tech@signalwayantibody.com)

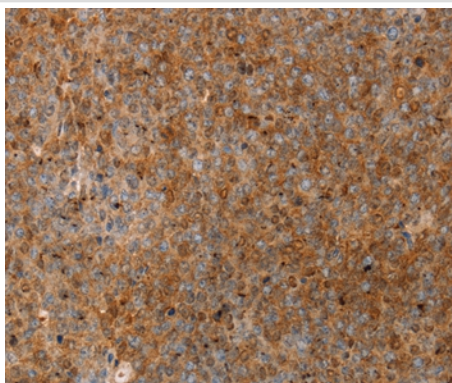
## Description

Product Name	SERPINB2 Antibody
Host Species	Rabbit
Clonality	Polyclonal
Purification	Antigen affinity purification.
Applications	IHC
Species Reactivity	Hu
Specificity	The antibody detects endogenous levels of total SERPINB2 protein.
Immunogen Type	Recombinant Protein
Immunogen Description	Fusion protein corresponding to residues near the C terminal of human serpin peptidase inhibitor, clade B (ovalbumin), member 2
Target Name	SERPINB2
Other Names	PAI; PAI2; PAI-2; PLANH2; HsT1201
Accession No.	Swiss-Prot#: P05120NCBI Gene ID: 5055Gene Accssion: BC012609/P05120
Uniprot	P05120
GeneID	5055;
Concentration	1.8mg/ml
Formulation	Rabbit IgG in pH7.4 PBS, 0.05% NaN <sub>3</sub> , 40% Glycerol.
Storage	Store at -20°C

## Application Details

Immunohistochemistry: 1:25-1:100

## Images



Immunohistochemical analysis of paraffin-embedded Human ovarian cancer tissue using #36679 at dilution 1/20.

## Background

Plasminogen activator inhibitor-2?(placental PAI) is a?coagulation?factor that inactivates?tPA?and?urokinase. It is present in most cells, especially monocytes/macrophages. PAI-2 exists in two forms, a 60-kDa extracellular glycosylated form and a 43-kDa intracellular form. It is present

only at detectable quantities in blood during pregnancy, as it is produced by the placenta, and may explain partially the increased rate of thrombosis during pregnancy.

---

Note: This product is for in vitro research use only