

## PDLIM7 Antibody

Catalog No: #36688

Orders: [order@signalwayantibody.com](mailto:order@signalwayantibody.com)Support: [tech@signalwayantibody.com](mailto:tech@signalwayantibody.com)

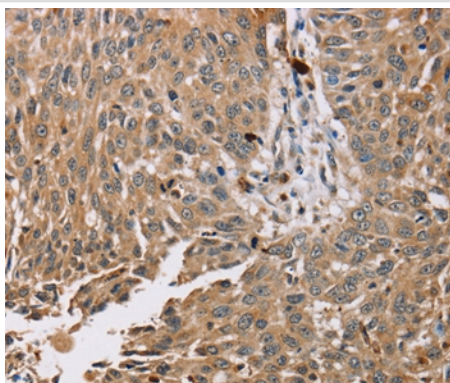
## Description

Product Name	PDLIM7 Antibody
Host Species	Rabbit
Clonality	Polyclonal
Purification	Antigen affinity purification.
Applications	IHC
Species Reactivity	Hu
Specificity	The antibody detects endogenous levels of total PDLIM7 protein.
Immunogen Type	Recombinant Protein
Immunogen Description	Fusion protein corresponding to a region derived from internal residues of human PDZ and LIM domain 7 (enigma)
Target Name	PDLIM7
Other Names	LMP1; LMP3
Accession No.	Swiss-Prot#: Q9NR12NCBI Gene ID: 9260Gene Accssion: BC001093/Q9NR12
Uniprot	Q9NR12
GeneID	9260;
Concentration	1.9mg/ml
Formulation	Rabbit IgG in pH7.4 PBS, 0.05% NaN <sub>3</sub> , 40% Glycerol.
Storage	Store at -20°C

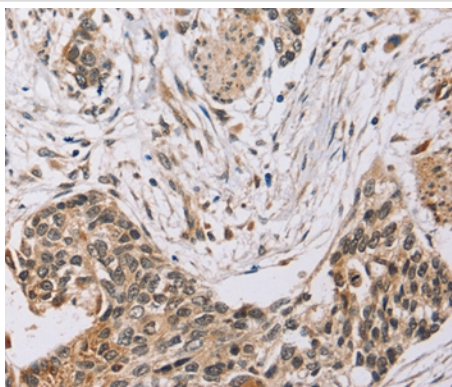
## Application Details

Immunohistochemistry: 1:50-1:200

## Images



Immunohistochemical analysis of paraffin-embedded Human lung cancer tissue using #36688 at dilution 1/35.



Immunohistochemical analysis of paraffin-embedded Human esophagus cancer tissue using #36688 at dilution 1/35.

## Background

The protein encoded by this gene is representative of a family of proteins composed of conserved PDZ and LIM domains. LIM domains are proposed to function in protein-protein recognition in a variety of contexts including gene transcription and development and in cytoskeletal interaction. The LIM domains of this protein bind to protein kinases, whereas the PDZ domain binds to actin filaments.

Note: This product is for in vitro research use only