

PEF1 Antibody

Catalog No: #36690



Orders: [order@signalwayantibody.com](mailto:order@signalwayantibody.com)  
Support: [tech@signalwayantibody.com](mailto:tech@signalwayantibody.com)

Description

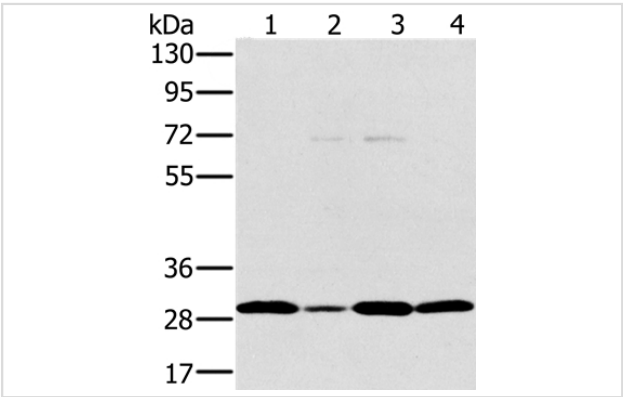
Product Name	PEF1 Antibody
Host Species	Rabbit
Clonality	Polyclonal
Purification	Antigen affinity purification.
Applications	WB IHC
Species Reactivity	Hu
Specificity	The antibody detects endogenous levels of total PEF1 protein.
Immunogen Type	Recombinant Protein
Immunogen Description	Fusion protein corresponding to a region derived from internal residues of human penta-EF-hand domain containing 1
Target Name	PEF1
Other Names	ABP32; PEF1A
Accession No.	Swiss-Prot#: Q9UBV8NCBI Gene ID: 553115Gene Accssion: BC012561/Q9UBV8
Uniprot	Q9UBV8
GeneID	553115;
SDS-PAGE MW	30kd
Concentration	0.9mg/ml
Formulation	Rabbit IgG in pH7.4 PBS, 0.05% NaN3, 40% Glycerol.
Storage	Store at -20°C

Application Details

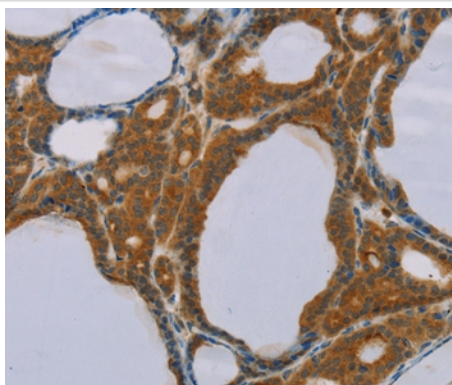
Western blotting: 1:500-1:2000

Immunohistochemistry: 1:25-1:100

Images



Gel: 8%SDS-PAGE  
Lysates (from left to right): Jurkat and hela cell, 293T cell and human thyroid cancer tissue  
Amount of lysate: 40ug per lane  
Primary antibody: 1/200 dilution  
Secondary antibody dilution: 1/8000  
Exposure time: 20 seconds



Immunohistochemical analysis of paraffin-embedded Human thyroid cancer tissue using #36690 at dilution 1/20.

## Background

This gene encodes a calcium-binding protein belonging to the penta-EF-hand protein family. The encoded protein has been shown to form a heterodimer with the programmed cell death 6 gene product and may modulate its function in  $\text{Ca}^{2+}$  signaling. Alternative splicing results in multiple transcript variants and a pseudogene has been identified on chromosome 1.

Note: This product is for in vitro research use only