

RAB39 Antibody

Catalog No: #36737

Orders: order@signalwayantibody.comSupport: tech@signalwayantibody.com

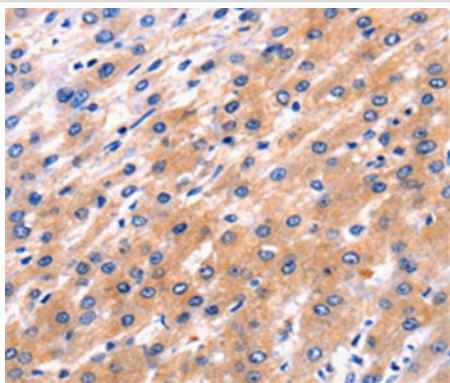
Description

Product Name	RAB39 Antibody
Host Species	Rabbit
Clonality	Polyclonal
Purification	Antigen affinity purification.
Applications	IHC
Species Reactivity	Hu
Specificity	The antibody detects endogenous levels of total RAB39 protein.
Immunogen Type	Peptide
Immunogen Description	Synthetic peptide corresponding to a region derived from internal residues of human Ras-related protein Rab-39A
Target Name	RAB39
Other Names	Rab39A
Accession No.	Swiss-Prot#: Q14964NCBI Gene ID: 54734Gene Accssion: NP_059986
Uniprot	Q14964
GeneID	54734;
Concentration	0.5mg/ml
Formulation	Rabbit IgG in pH7.4 PBS, 0.05% NaN ₃ , 40% Glycerol.
Storage	Store at -20°C

Application Details

Immunohistochemistry: 1:5-1:25

Images



Immunohistochemical analysis of paraffin-embedded Human liver cancer tissue using #36737 at dilution 1/5.

Background

This gene encodes a small GTP-binding protein that belongs to the largest family within the Ras superfamily. Rab39 is a Golgi-associated protein involved in endocytosis of HeLa cells. It contains conserved motifs referred to phosphate/guanosine binding and a microbody C-terminal targeting

signal. Rab39 is mostly detected in epithelial cell lines and expressed ubiquitously in human tissues. It can facilitate endocytosis in HeLa cells when expressed transiently and stably.

Note: This product is for in vitro research use only