

IAPP Antibody

Catalog No: #36738

Orders: order@signalwayantibody.comSupport: tech@signalwayantibody.com

Description

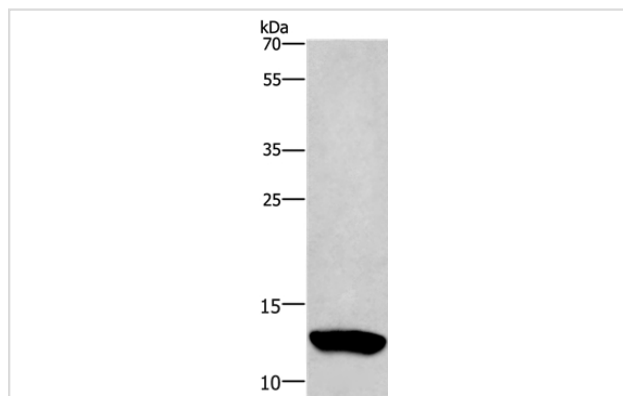
Product Name	IAPP Antibody
Host Species	Rabbit
Clonality	Polyclonal
Purification	Antigen affinity purification.
Applications	WB IHC
Species Reactivity	Hu
Specificity	The antibody detects endogenous levels of total IAPP protein.
Immunogen Type	Peptide
Immunogen Description	Synthetic peptide corresponding to a region derived from internal residues of human Islet amyloid polypeptide
Target Name	IAPP
Other Names	DAP; IAP
Accession No.	Swiss-Prot#: P10997NCBI Gene ID: 3375Gene Accssion: NP_000406
Uniprot	P10997
GeneID	3375;
SDS-PAGE MW	10kd
Concentration	0.4mg/ml
Formulation	Rabbit IgG in pH7.4 PBS, 0.05% NaN ₃ , 40% Glycerol.
Storage	Store at -20°C

Application Details

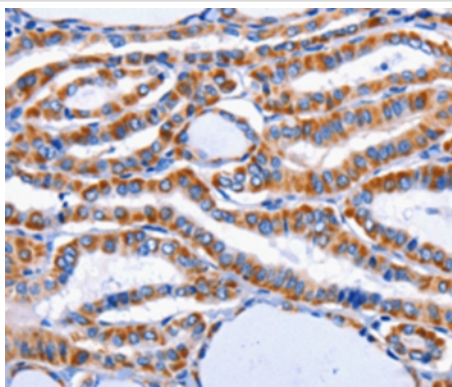
Western blotting: 1:200-1:1000

Immunohistochemistry: 1:10-1:50

Images



Gel: 12%SDS-PAGE
Lysate: 40ug Hela cell
Primary antibody: 1/200 dilution
Secondary antibody dilution: 1/8000
Exposure time: 1 minute



Immunohistochemical analysis of paraffin-embedded Human thyroid cancer tissue using #36738 at dilution 1/10.

Background

Islet, or insulinoma, amyloid polypeptide is commonly found in pancreatic islets of patients suffering diabetes mellitus type II, or harboring an insulinoma. While the association of amylin with the development of type II diabetes has been known for some time, a direct causative role for amylin has been harder to establish. Studies suggest that amylin, like the related beta-amyloid (Abeta) associated with Alzheimer's disease, can induce apoptotic cell-death in particular cultured cells, an effect that may be relevant to the development of type II diabetes.

Note: This product is for in vitro research use only