

AP1B1 Antibody

Catalog No: #36740

Orders: order@signalwayantibody.comSupport: tech@signalwayantibody.com

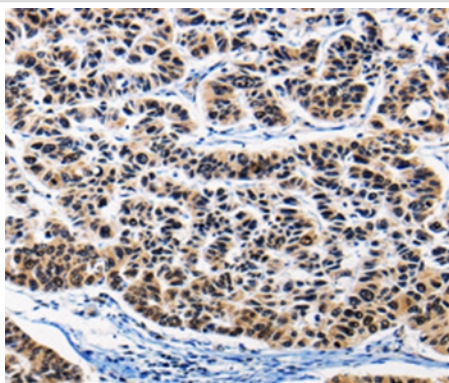
Description

Product Name	AP1B1 Antibody
Host Species	Rabbit
Clonality	Polyclonal
Purification	Antigen affinity purification.
Applications	IHC
Species Reactivity	Hu Ms Rt
Specificity	The antibody detects endogenous levels of total AP1B1 protein.
Immunogen Type	Peptide
Immunogen Description	Synthetic peptide corresponding to residues near the N terminal of human Adapter-related protein complex 1 subunit beta-1
Target Name	AP1B1
Other Names	ADTB1; BAM22; AP105A; CLAPB2
Accession No.	Swiss-Prot#: Q10567NCBI Gene ID: 162Gene Accssion: NP_001118
Uniprot	Q10567
GeneID	162;
Concentration	0.7mg/ml
Formulation	Rabbit IgG in pH7.4 PBS, 0.05% NaN ₃ , 40% Glycerol.
Storage	Store at -20°C

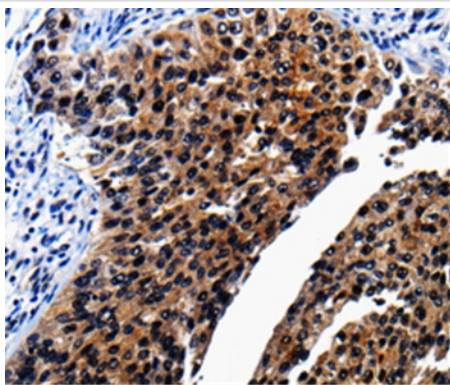
Application Details

Immunohistochemistry: 1:25-1:100

Images



Immunohistochemical analysis of paraffin-embedded Human renal cancer tissue using #36740 at dilution 1/25.



Immunohistochemical analysis of paraffin-embedded Human lung cancer tissue using #36740 at dilution 1/25.

Background

Adaptor protein complex 1 is found at the cytoplasmic face of coated vesicles located at the Golgi complex, where it mediates both the recruitment of clathrin to the membrane and the recognition of sorting signals within the cytosolic tails of transmembrane receptors. This complex is a heterotetramer composed of two large, one medium, and one small adaptin subunit. The protein encoded by this gene serves as one of the large subunits of this complex and is a member of the adaptin protein family. This gene is a candidate meningioma gene. Alternative splicing results in multiple transcript variants.

Note: This product is for in vitro research use only