

APOB Antibody

Catalog No: #36751

Orders: order@signalwayantibody.comSupport: tech@signalwayantibody.com

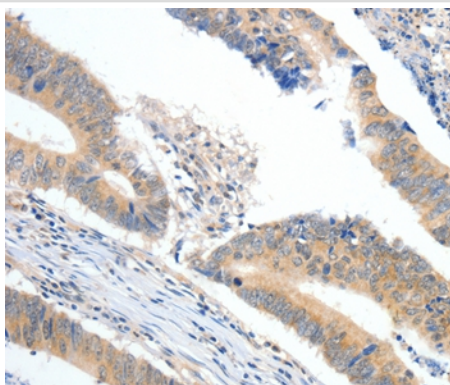
Description

Product Name	APOB Antibody
Host Species	Rabbit
Clonality	Polyclonal
Purification	Antigen affinity purification.
Applications	IHC
Species Reactivity	Hu
Specificity	The antibody detects endogenous levels of total APOB protein.
Immunogen Type	Peptide
Immunogen Description	Synthetic peptide corresponding to a region derived from internal residues of human apolipoprotein B (including Ag(x) antigen)
Target Name	APOB
Other Names	FLDB; LDLCQ4
Accession No.	Swiss-Prot#: P04114NCBI Gene ID: 338Gene Accssion: NP_000375
Uniprot	P04114
GeneID	338;
Concentration	0.5mg/ml
Formulation	Rabbit IgG in pH7.4 PBS, 0.05% NaN ₃ , 40% Glycerol.
Storage	Store at -20°C

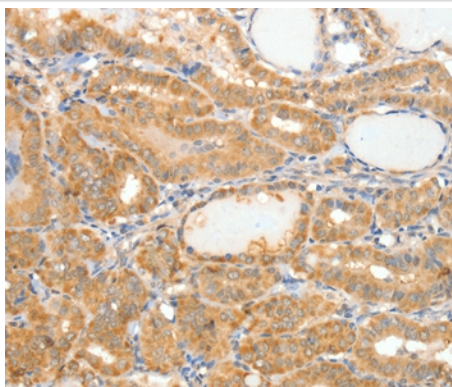
Application Details

Immunohistochemistry: 1:15-1:50

Images



Immunohistochemical analysis of paraffin-embedded Human colon cancer tissue using #36751 at dilution 1/10.



Immunohistochemical analysis of paraffin-embedded Human thyroid cancer tissue using #36751 at dilution 1/10.

Background

This gene product is the main apolipoprotein of chylomicrons and low density lipoproteins. It occurs in plasma as two main isoforms, apoB-48 and apoB-100: the former is synthesized exclusively in the gut and the latter in the liver. The intestinal and the hepatic forms of apoB are encoded by a single gene from a single, very long mRNA. The two isoforms share a common N-terminal sequence. The shorter apoB-48 protein is produced after RNA editing of the apoB-100 transcript at residue 2180 (CAA->UAA), resulting in the creation of a stop codon, and early translation termination. Mutations in this gene or its regulatory region cause hypobetalipoproteinemia, normotriglyceridemic hypobetalipoproteinemia, and hypercholesterolemia due to ligand-defective apoB, diseases affecting plasma cholesterol and apoB levels.

Note: This product is for in vitro research use only