

K48-linkage Specific Polyubiquitin pAb

Catalog No: #30339

Package Size: #30339-1 50ul #30339-2 100ul

Orders: order@signalwayantibody.comSupport: tech@signalwayantibody.com

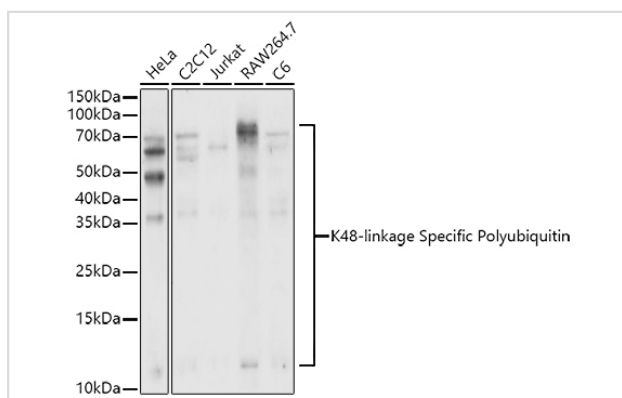
Description

Product Name	K48-linkage Specific Polyubiquitin pAb
Host Species	Rabbit
Clonality	Polyclonal
Isotype	IgG
Purification	Affinity purification
Applications	WB
Species Reactivity	Human,Mouse,Rat
Immunogen Description	A synthetic peptide corresponding to a sequence containing polyubiquitinated protein (K48 linkage).
Conjugates	Unconjugated
Calculated MW	Refer to figures
SDS-PAGE MW	10-100KDa
Formulation	PBS with 0.02% sodium azide,50% glycerol,pH7.3.
Storage	Store at -20°C. Avoid freeze / thaw cycles.

Application Details

WB □ 1:500 - 1:2000

Images



Western blot analysis of extracts of various cell lines, using K48-linkage Specific Polyubiquitin antibody.

Published Papers

el at., Tripartite motif 25 inhibits protein aggregate degradation during PRRSV infection by suppressing p62-mediated autophagy. In J Virol on 2024 Nov 19 by Jiahui Ren, Qiming Pei,et al..PMID:39480084, , (2024)

[PMID:39480084](https://pubmed.ncbi.nlm.nih.gov/39480084/)

Note: This product is for in vitro research use only and is not intended for use in humans or animals.