

Occludin Antibody

Catalog No: #45047

Package Size: #45047-1 50ul #45047-2 100ul

Orders: order@signalwayantibody.comSupport: tech@signalwayantibody.com

Description

Product Name	Occludin Antibody
Host Species	Rabbit
Clonality	Polyclonal
Purification	Immunogen affinity purified
Applications	WB,IHC,IF
Species Reactivity	Hu Ms Rt
Specificity	Occludin Antibody detects endogenous levels of total Occludin
Immunogen Type	Peptide
Immunogen Description	A synthesized peptide derived from human Occludin
Conjugates	Unconjugated
Target Name	Occludin
Other Names	OCLN, Occludin, BLCPMG
Accession No.	Swiss-Prot#: Q16625NCBI Gene ID:100506658
Calculated MW	62 kDa
Concentration	1.0mg/mL
Formulation	Rabbit IgG in phosphate buffered saline , pH 7.4, 150mM NaCl, 0.02% sodium azide and 50% glycerol.
Storage	Store at -20°C

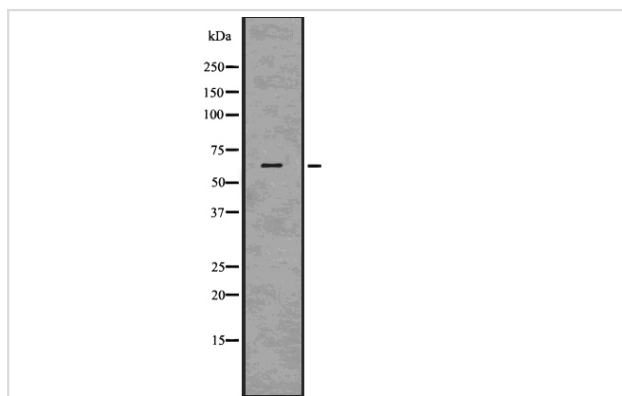
Application Details

Western blotting: 1:1000-3000

IHC 1:200

IF 1:200

Images



Western blot analysis Occludin using COLO205 whole cell lysates

Published Papers

Jin Yuan;Junwei Su;Shaowen Zhong;Xin Yuan;Jianping Zhu;Shuangxi Lu;Di Zhang;Guiling Li;Hanyu Xue;Min Yan;Lei Yue;Tianwu Zhang et al.,
Dictamnine alleviates DSS-induced colitis mice by inhibiting ferroptosis of enterocytes via activating Nrf2-Gpx4 signaling pathway., (2025)

PMID:40049578

Note: This product is for in vitro research use only and is not intended for use in humans or animals.