

PKC beta 1 Rabbit mAb

Catalog No: #59578

Package Size: #59578-1 50ul #59578-2 100ul

Orders: order@signalwayantibody.comSupport: tech@signalwayantibody.com

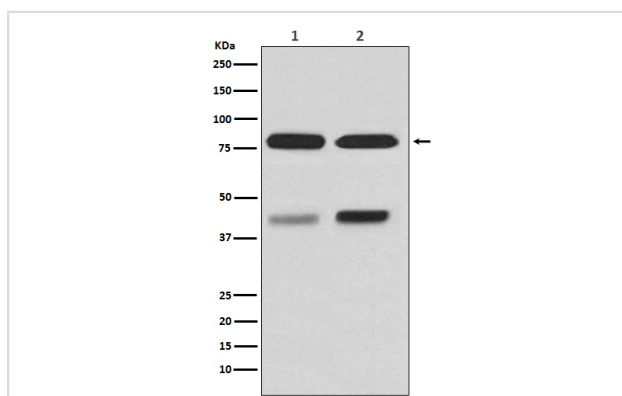
Description

| | |
|-----------------------|--|
| Product Name | PKC beta 1 Rabbit mAb |
| Host Species | Rabbit |
| Clonality | Monoclonal |
| Isotype | Rabbit IgG |
| Purification | Affinity-chromatography |
| Applications | WB IHC ICC/IF FC |
| Species Reactivity | Human Mouse Rat |
| Specificity | PKC beta 1 Antibody detects endogenous levels of total PKC beta 1 |
| Immunogen Description | A synthesized peptide derived from human PKC beta 1 |
| Other Names | PKC beta; PKCB; Prkcb; PRKCB I; PRKCB1; PRKCB2; Protein kinase C beta; |
| Accession No. | Uniprot:P05771 |
| Formulation | Rabbit IgG in phosphate buffered saline , pH 7.4, 150mM NaCl, 0.02% sodium azide and 50% glycerol. |
| Storage | Store at +4°C short term. Store at -20°C long term. Avoid freeze / thaw cycle. |

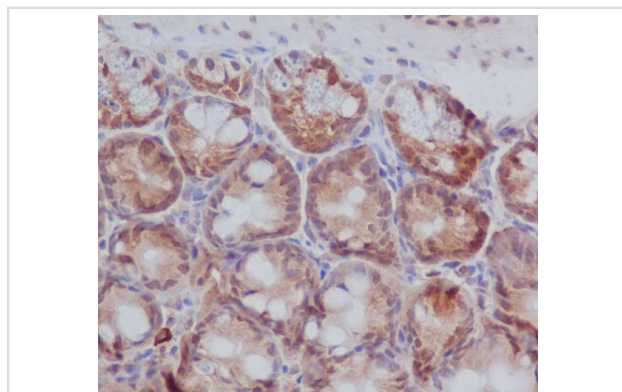
Application Details

WB 1:500~1:2000 IHC 1:50~1:200 ICC/IF 1:50~1:200 FC 1:100

Images



Western blot analysis of PKC beta 1 expression in (1) HeLa cell lysate; (2) NIH/3T3 cell lysate.



Immunohistochemical analysis of paraffin-embedded mouse colon, using PKC beta 1 Antibody.

Background

Plays a key role in B-cell activation and function by regulating BCR-induced NF-kappa-B activation and B-cell survival.

Note: This product is for in vitro research use only and is not intended for use in humans or animals.