

## Mast Cell Chymase Rabbit mAb

Catalog No: #59713

Package Size: #59713-1 50ul #59713-2 100ul

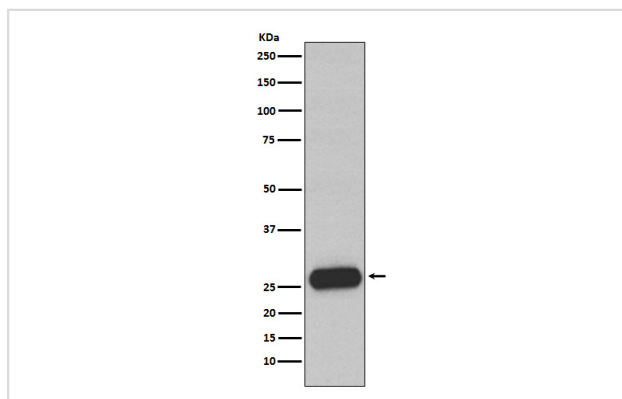
## Description

Product Name	Mast Cell Chymase Rabbit mAb
Host Species	Rabbit
Clonality	Monoclonal
Isotype	Rabbit IgG
Purification	Affinity-chromatography
Applications	WB IHC
Species Reactivity	Human
Specificity	Mast Cell Chymase Antibody detects endogenous levels of total Mast Cell Chymase
Immunogen Description	A synthesized peptide derived from human Mast Cell Chymase
Other Names	Chymase 1; Chymase; CMA1; CYH; CYM; Mcp-5; MCP3P; Mcpt5; MCT1; MMCP-5;
Accession No.	Uniprot:P23946
Formulation	Rabbit IgG in phosphate buffered saline , pH 7.4, 150mM NaCl, 0.02% sodium azide and 50% glycerol.
Storage	Store at +4°C short term. Store at -20°C long term. Avoid freeze / thaw cycle.

## Application Details

WB 1:1000~1:5000 IHC 1:50~1:200

## Images



Western blot analysis of Mast Cell Chymase expression in Human small intestine lysate.

## Background

Major secreted protease of mast cells with suspected roles in vasoactive peptide generation, extracellular matrix degradation, and regulation of gland secretion.

Note: This product is for in vitro research use only and is not intended for use in humans or animals.